

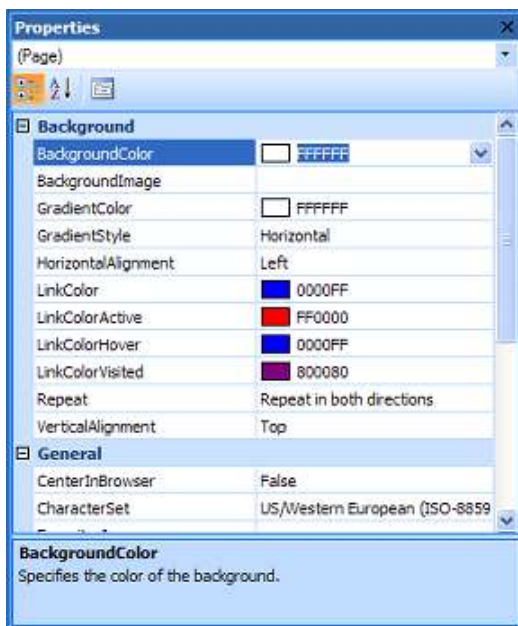
What is new in WYSIWYG Web Builder 6.0?

After months of hard work, we plan to release the new version of WYSIWYG Web Builder in March 2009. This document gives a brief idea of what you might expect in this major new release. WYSIWYG Web Builder 6.0 has more than **60 new features** and enhancements! Here's a list of some of these features.

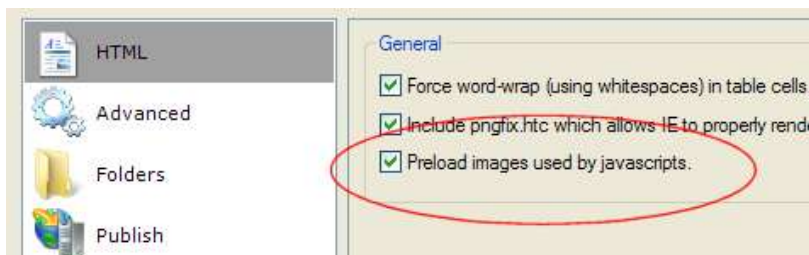
Important note: The information in this document is based on the beta version of WYSIWYG Web Builder 6.0. This list is not complete and features maybe added or removed in the final version.

General features:

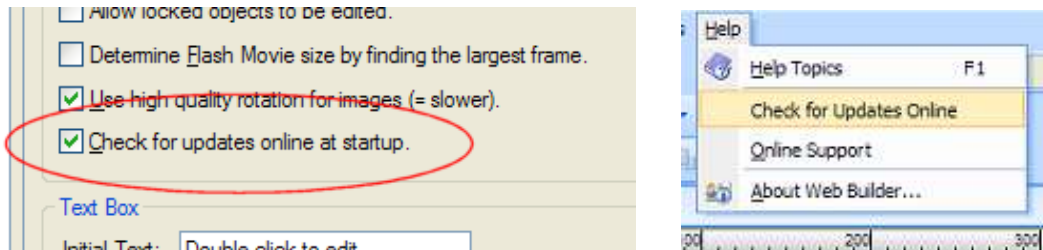
- **Improved:** Redesigned internal link management, resulting in a major speed improvement in Site Manager operations and the overall stability.
- **Improved:** Color values are now displayed in HTML (HEX) format instead of RGB.



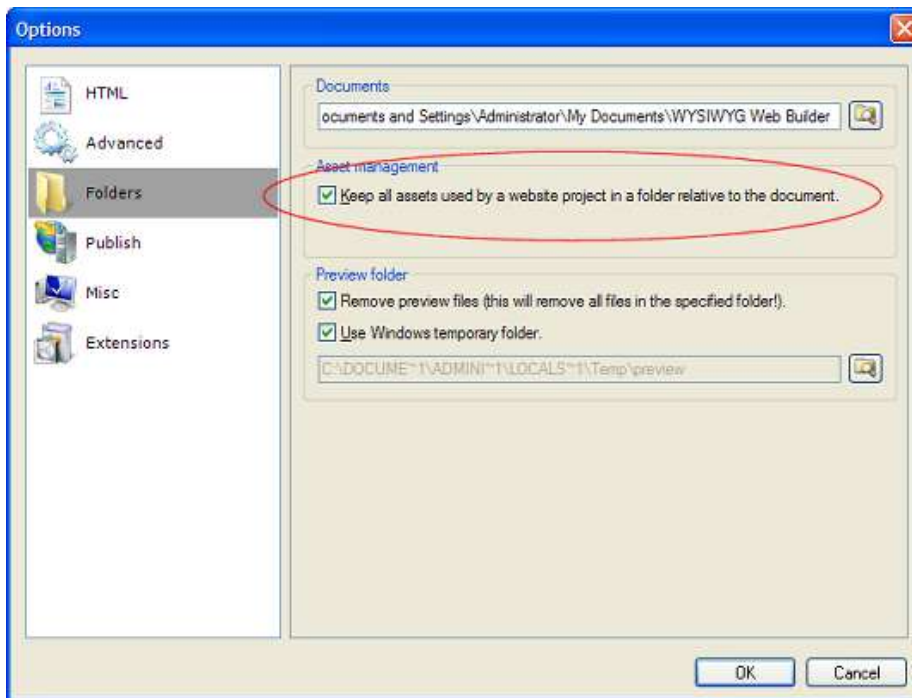
- **New feature:** 'Preload images used by javascripts' option in Options. Enabling this option will preload all images of a pages used by the javascript (like the navigationbar) when the page is loaded.



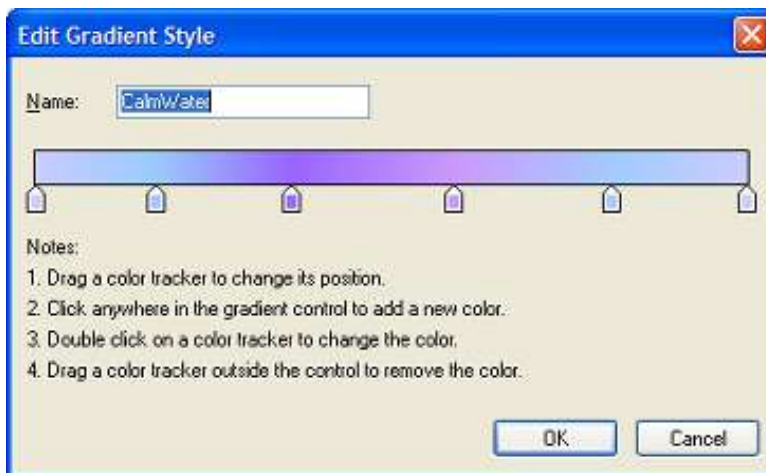
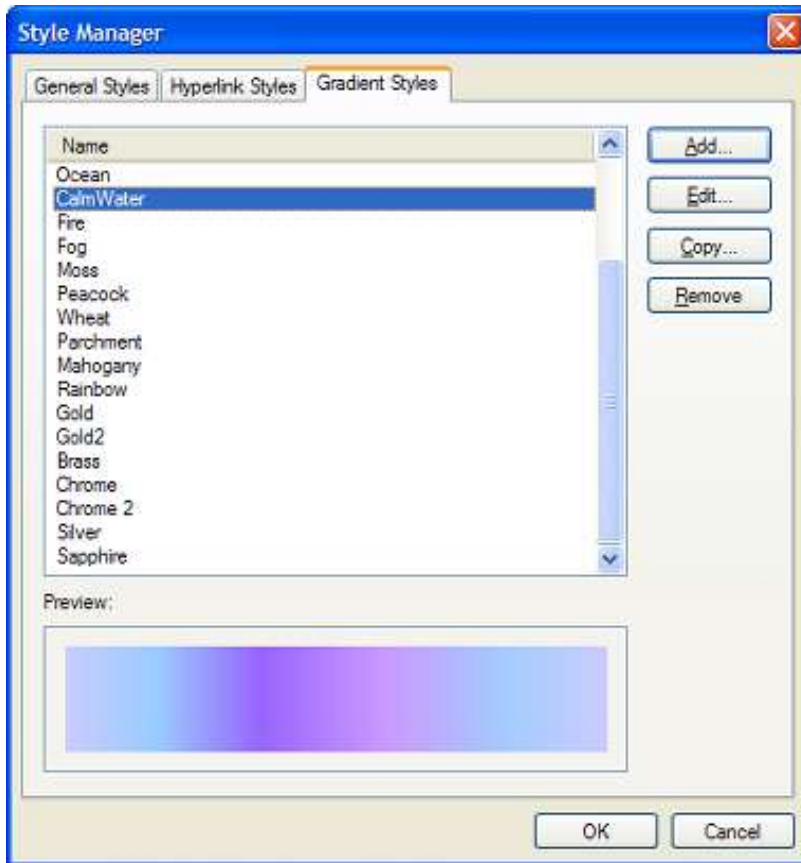
- **New feature:** Check for updates online.



- **New feature:** Web Builder can now copy all assets to a sub folder of the project automatically, this will make keeping track of all files used by the project much easier.

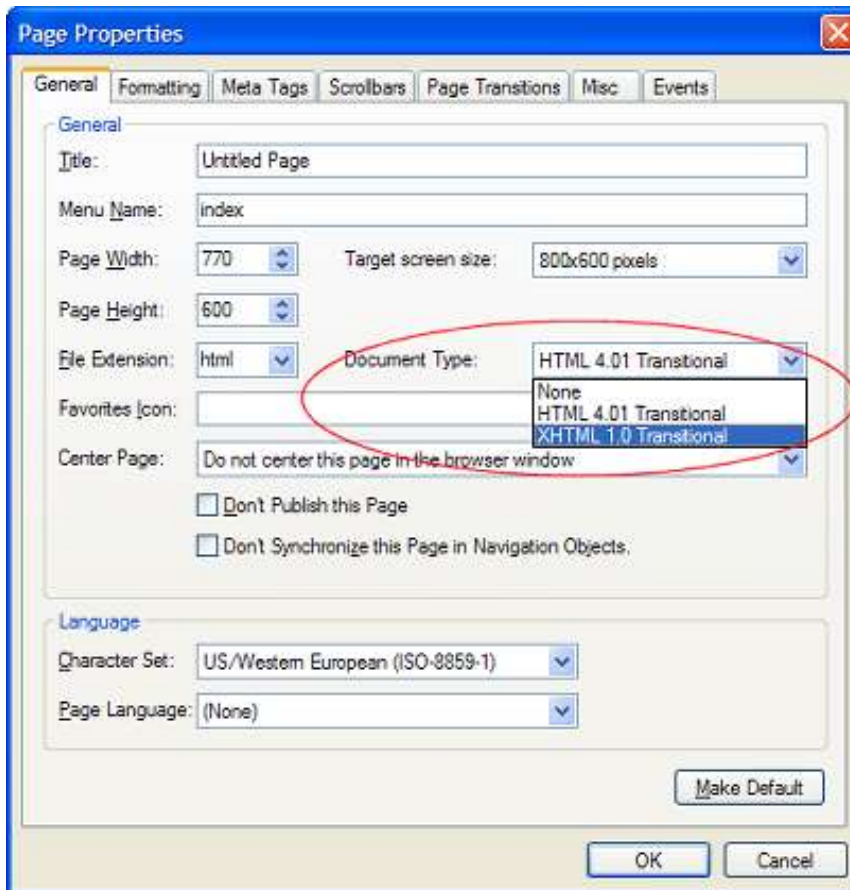


- **New feature:** Gradient Style Manager to add/edit and remove global (multi color) gradients effects.



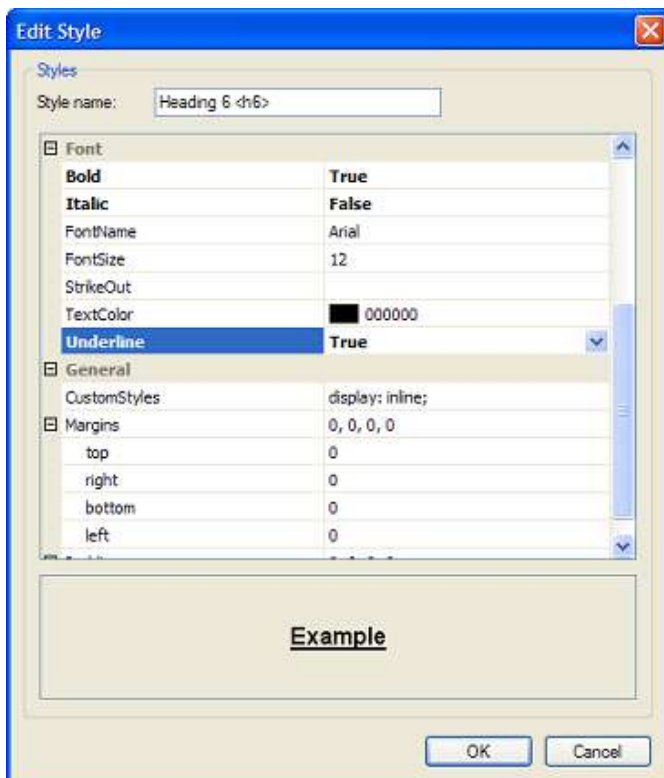
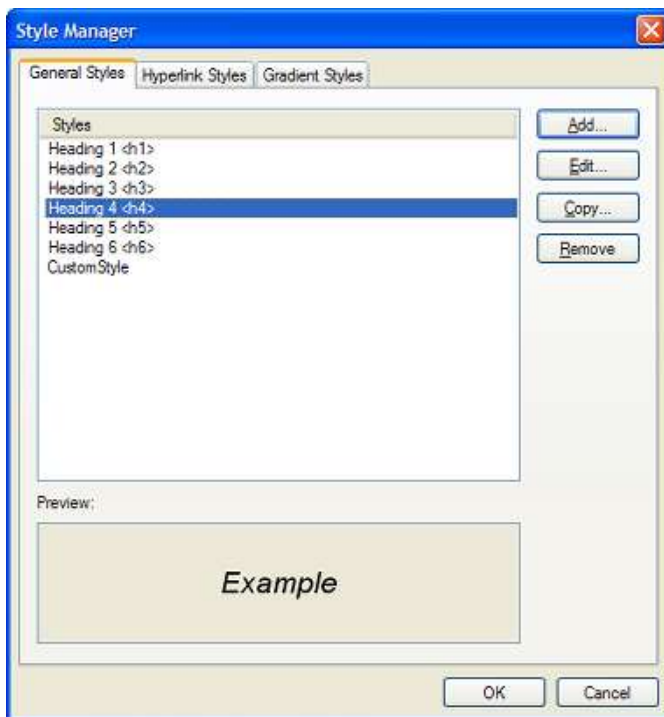
New Page features:

- **Improved:** Redesigned page properties to get a better overview of the available options.
- **New feature:** Predefined target screen sizes in Page Properties. Suggests the optimal page size for a specific screen resolution.
- **New feature:** Added support for XHTML! Web Builder can now optionally generate XHTML 1.0 Transitional. More variants are planned for future updates.
- **New feature:** New Document Type property in Page Properties (selects between HTML or XHTML output).

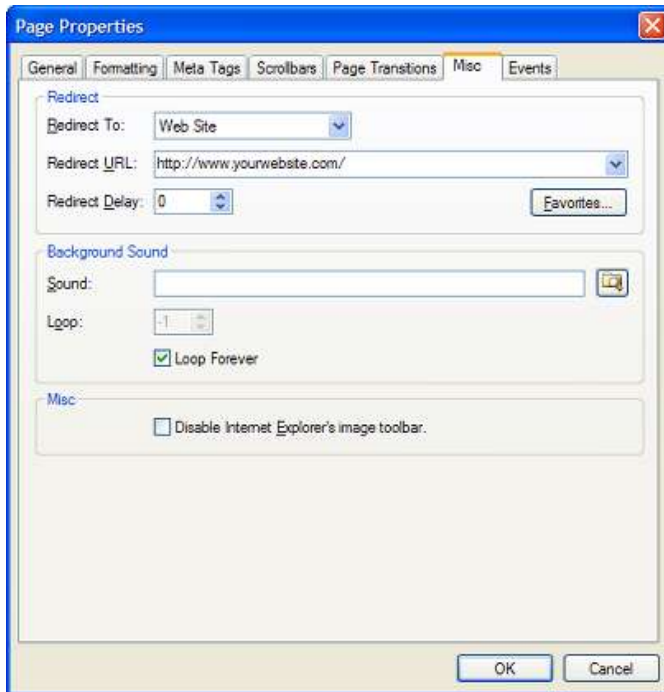


- **New feature:** Categories meta tags in Page Properties. Also used by the new SiteTree object to categorize pages.
- **New feature:** Header style support for text (H1, H2, H3 etc)! For SEO enthusiasts...

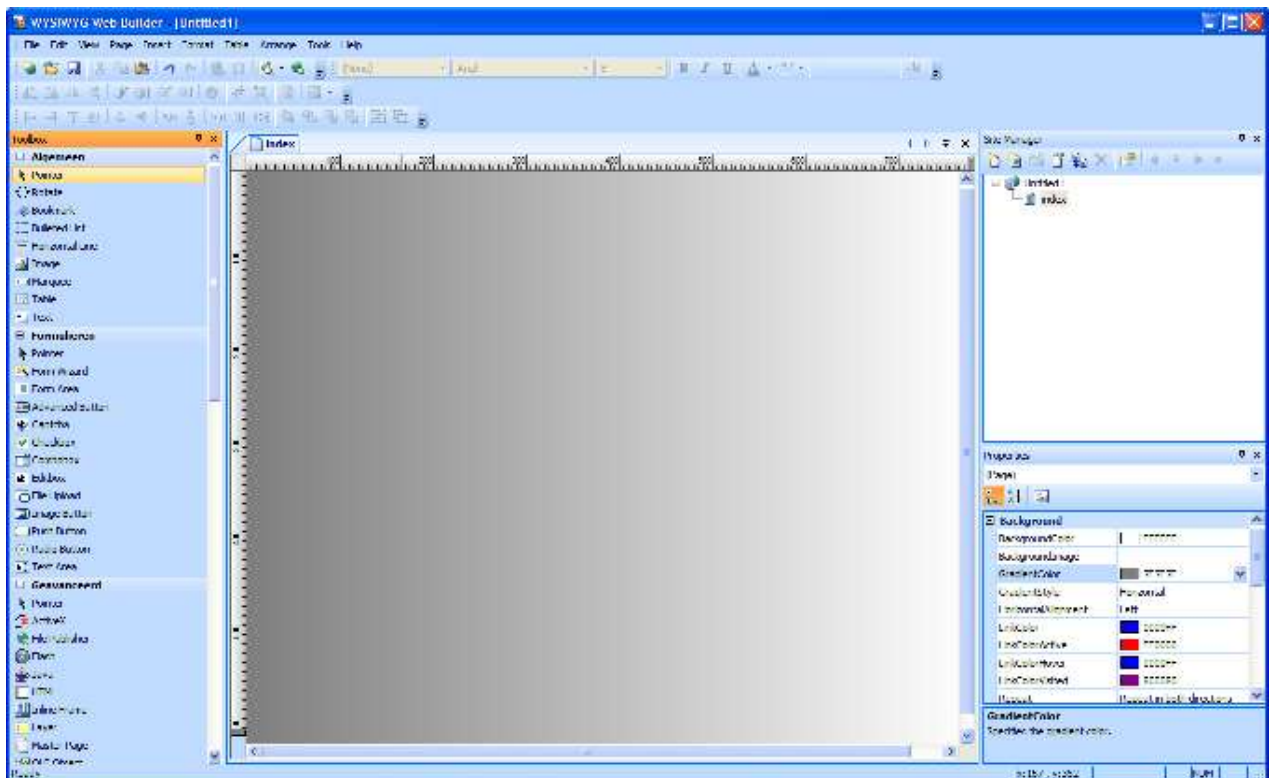
- **New feature:** Styles Manager, a central place to update the styles of multiple objects. For example, update all fonts of your website in one operation. Custom style are also supported.



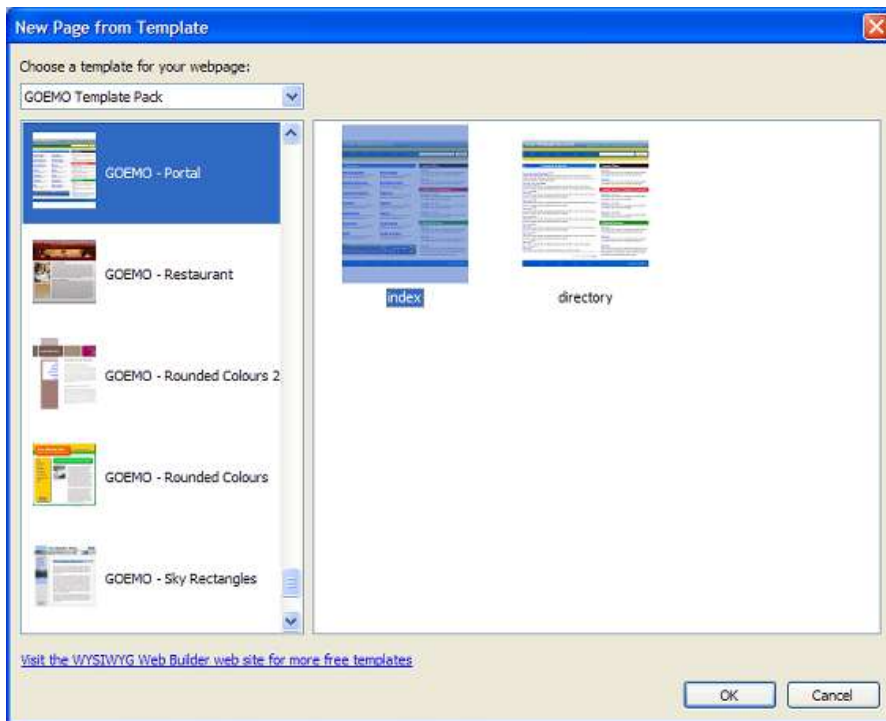
- **New feature:** Redirect in Page Properties (refresh meta tag). This property redirects the user to another page after a specific delay.



- **New feature:** Added Page background gradient color property for cool gradient background effects.

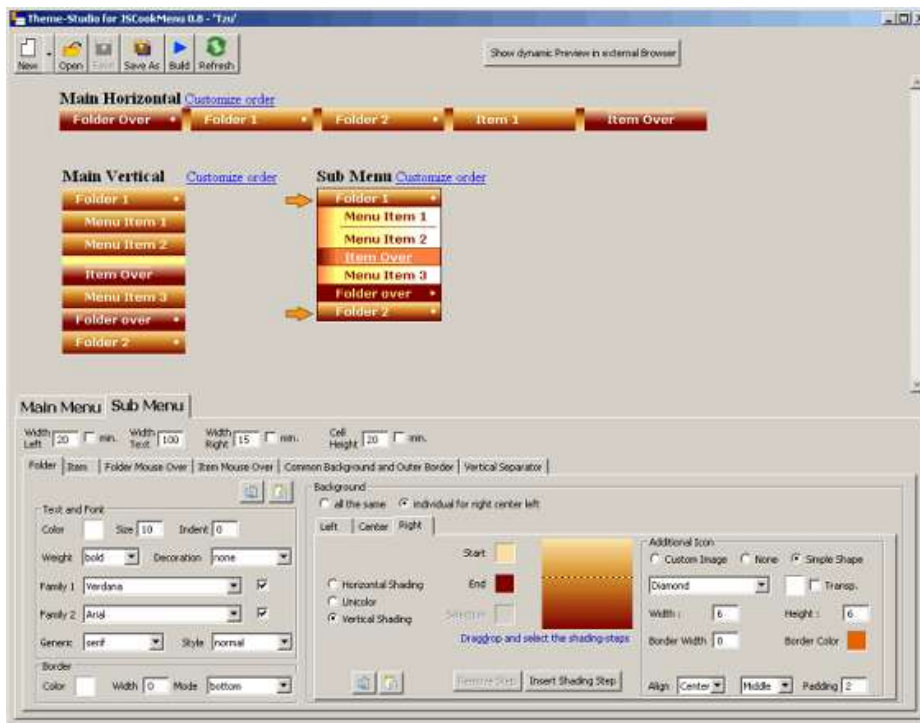


- **New feature:** Create a new page based on a template. Pick any page from a template and insert it into the current project.



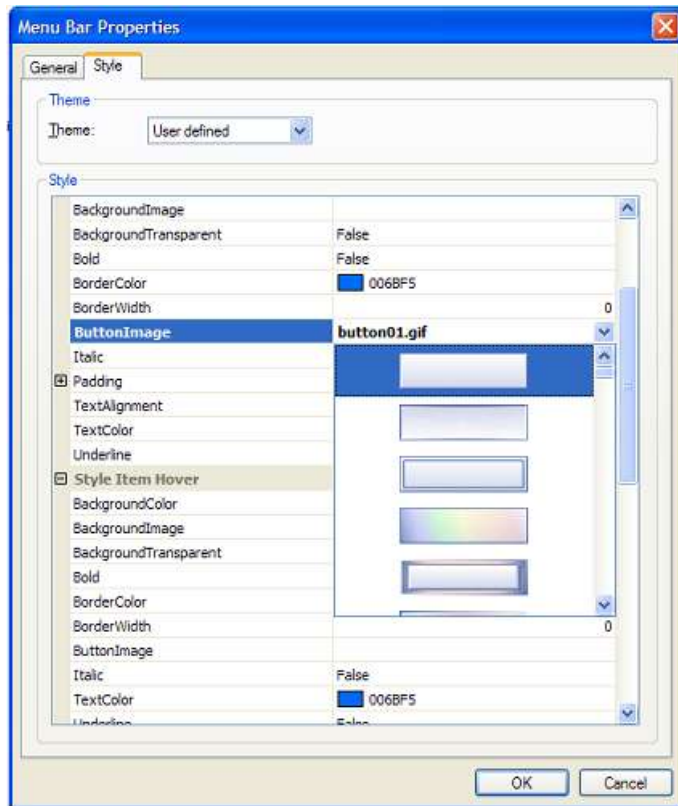
New Menubar features:

- **Improved:** Redesigned the menubar properties window, for a better overview of all the properties.
- **Improved:** Menubar themes use the user defined font and size (instead of the default theme font/size) for more flexibility.
- **Improved:** Menubar themes now are rendered in the workspace too.
- **New feature:** Added Text alignment property to menubar.
- **New feature:** The menubar is now compatible with Theme Studio menubar themes (<http://tapestry-jsmenu.sourceforge.net/theme-builder/>). So you can easily create new menubar styles with this great tool!

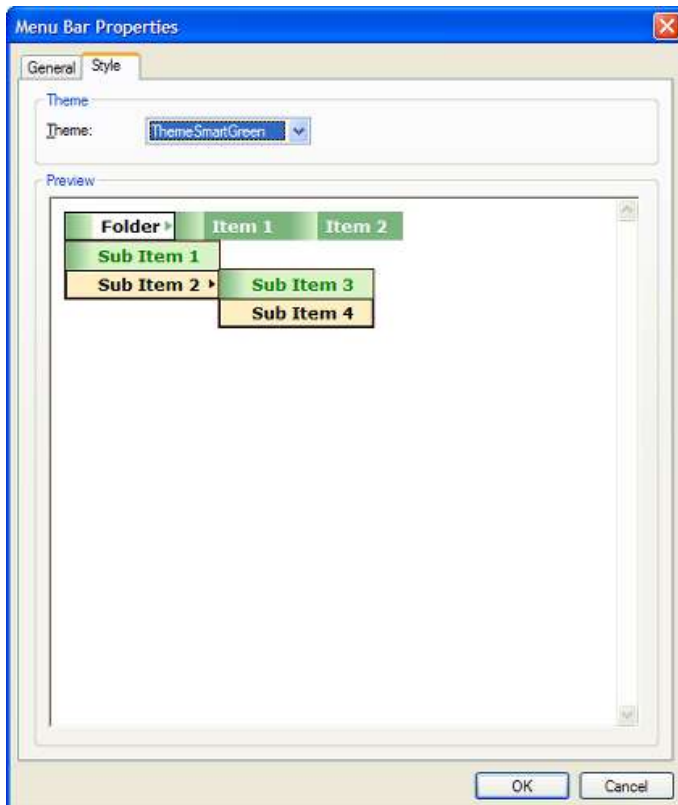


- **New feature:** Added support for button images to the menubar (to create a navigationbar with dropdown menus!)



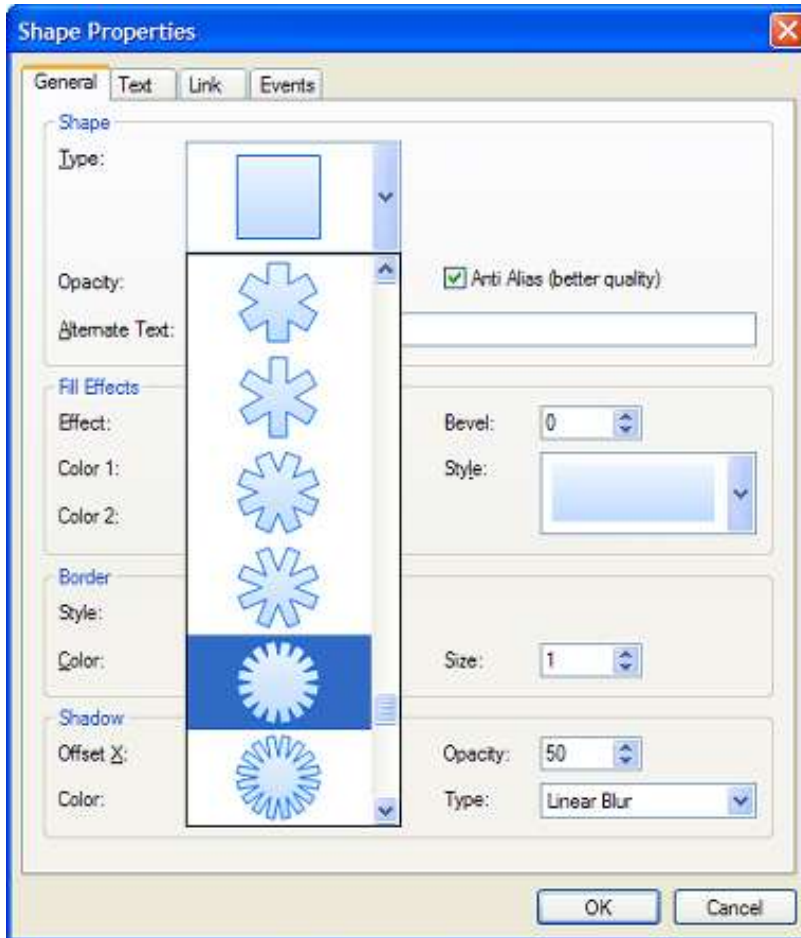


- **New feature:** Added many new menu bar styles.



New Shape features:

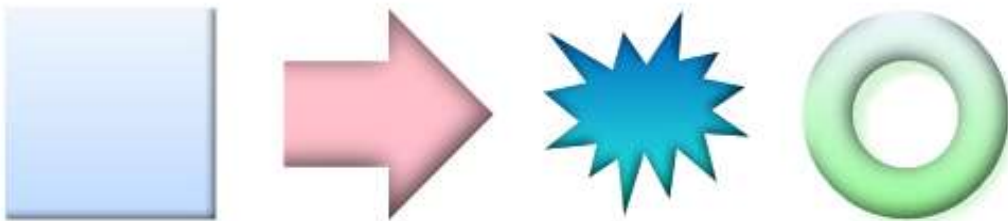
- **Improved:** Shape object now uses Gdiplus and supports pattern and glass effects even when anti-alias is off.
- **Improved:** Rewritten Color quantizer for gdiplus.
- **Improved:** During resizing of shape only the outline is drawn for better performance.
- **Improved:** New shape selection menu for easier shape selection (shape preview).



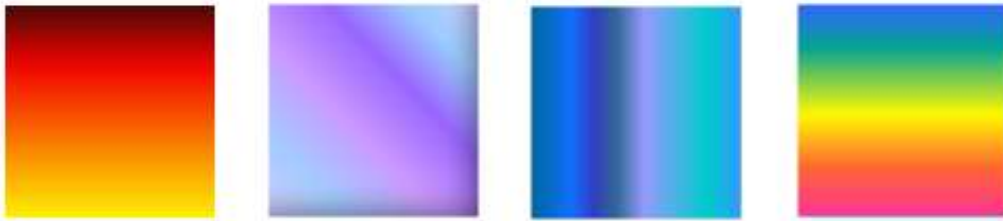
- **New feature:** New shape type: round corner, a rectangle with rounded corners which can be enabled individually.



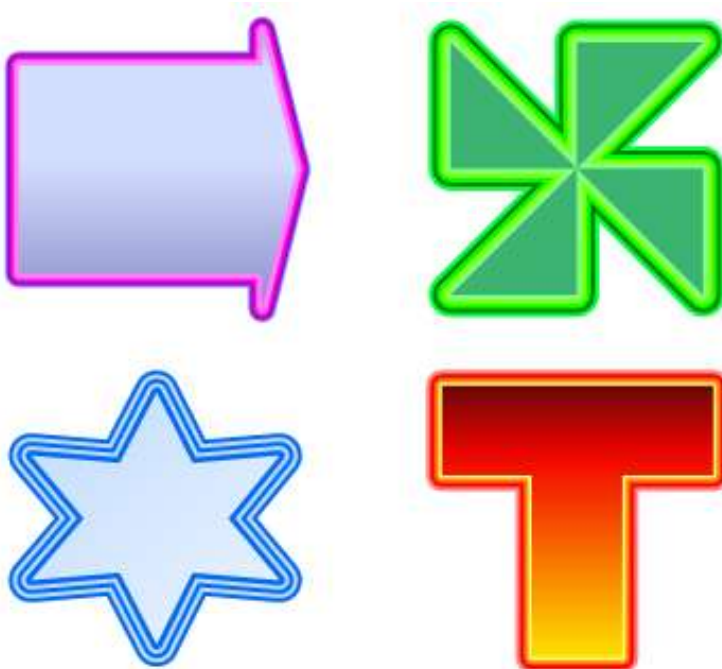
- **New feature:** 30+ new shapes! crowns, alternating star, blockstars and many more!
- **New feature:** Added Solid shadow style for anti-aliased shapes.
- **New feature:** Bevel effect. A cool 3d effect!



- **New feature:** Added support for multi color gradients. Fully customizable.

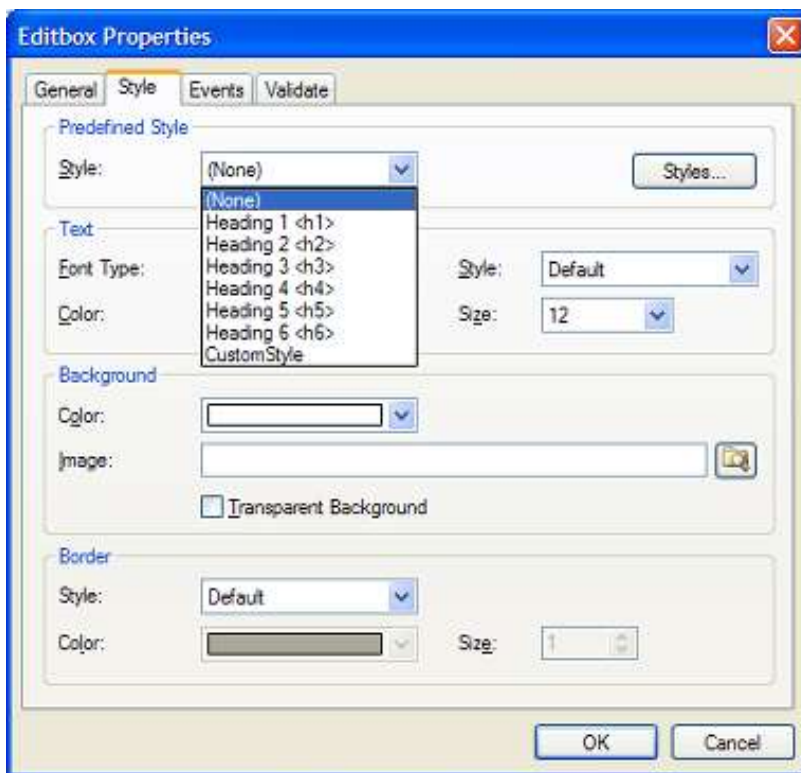
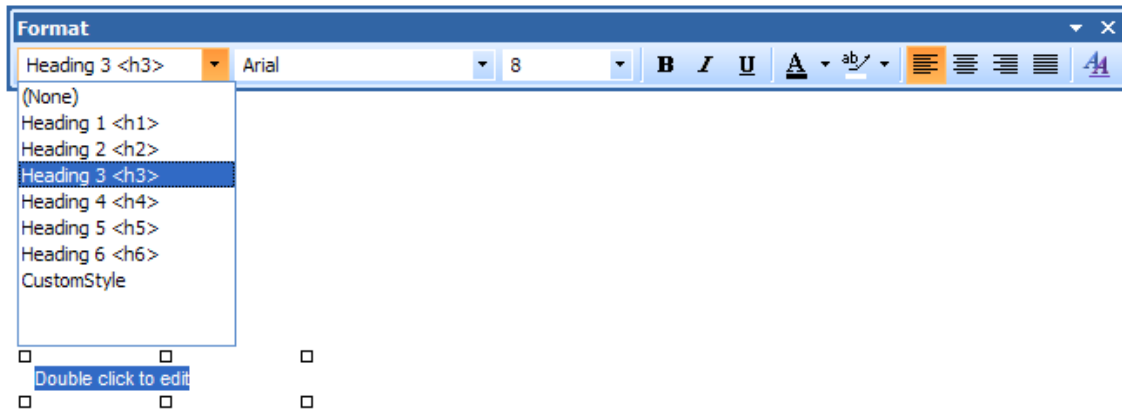


- **New feature:** New Borderstyle: outline, multi color borders.

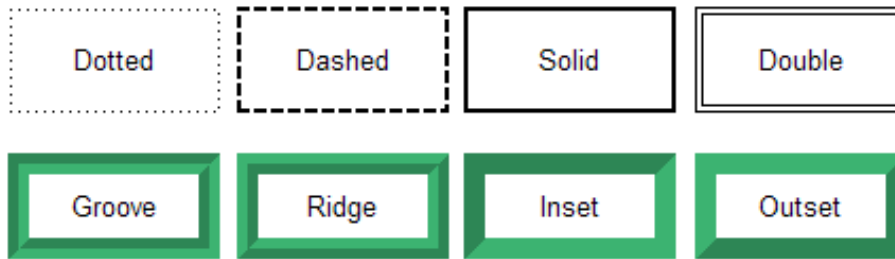


New Form features:

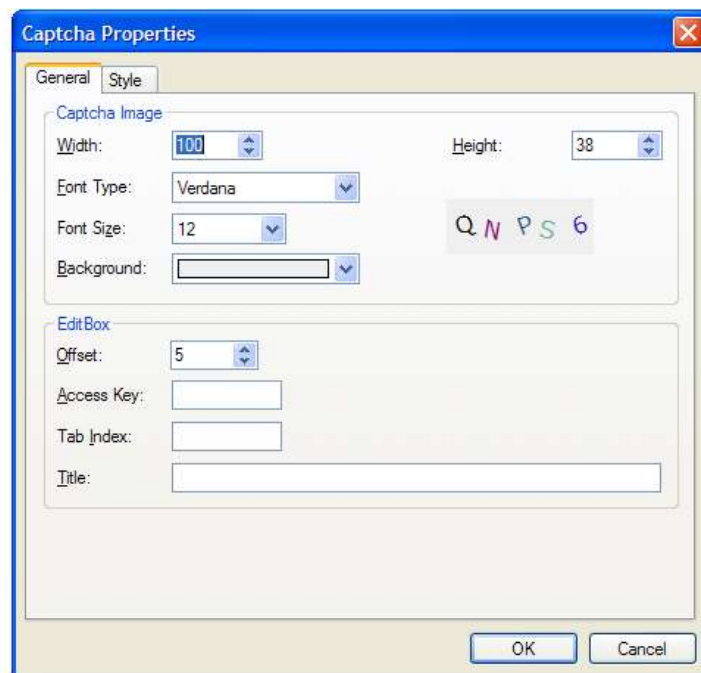
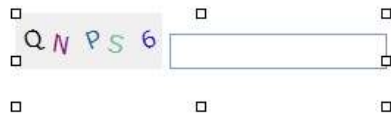
- **New feature:** Text, Form Controls and other HTML elements can now use pre defined styles.



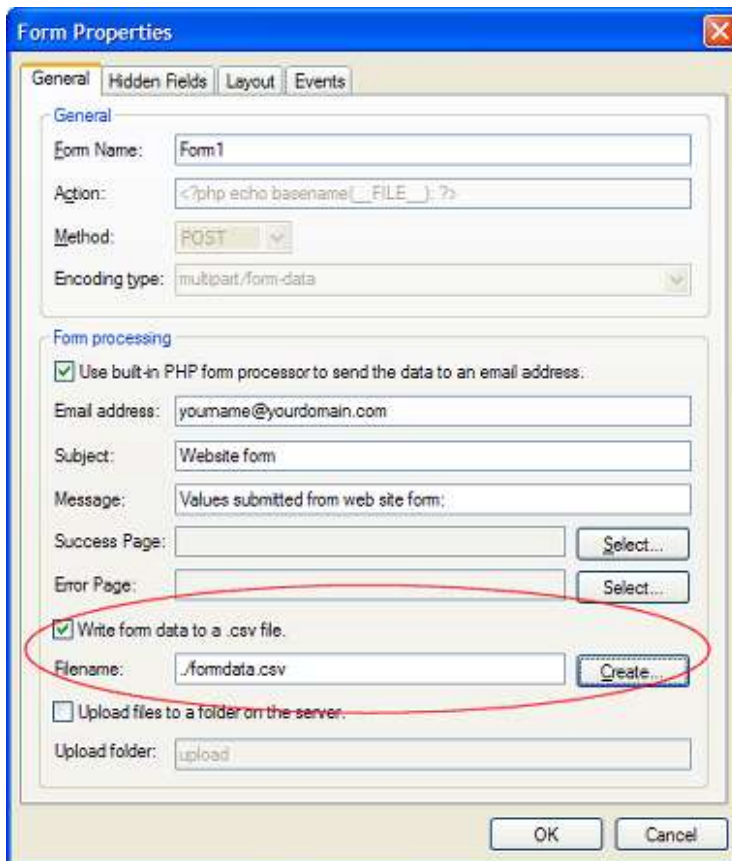
- **New feature:** Added Border styles (Dotted, Dashed to most standard HTML objects like Form Controls, Images, Marquee, Tables)



- **New feature:** Captcha object for (PHP) forms. Stop spammers from submitting form data automatically.



- **New feature:** Added the ability to write form data to a (csv) file.



The 'Form Properties' dialog box is shown with the 'General' tab selected. It contains fields for 'Form Name' (Form1), 'Action' (a PHP script), 'Method' (POST), and 'Encoding type' (multipart/form-data). The 'Form processing' section has several options: 'Use built-in PHP form processor to send the data to an email address' (checked), 'Email address' (youname@yourdomain.com), 'Subject' (Website form), 'Message' (Values submitted from web site form), 'Success Page' and 'Error Page' (both empty with 'Select...' buttons), 'Write form data to a .csv file.' (checked), 'Filename' (./formdata.csv) with a 'Create...' button, and 'Upload files to a folder on the server.' (unchecked) with an 'Upload folder' field (upload). A red circle highlights the 'Write form data to a .csv file.' section.

Form Properties

General Hidden Fields Layout Events

General

Form Name: Form1

Action: <?php echo basename(__FILE__); ?>

Method: POST

Encoding type: multipart/form-data

Form processing

☒ Use built-in PHP form processor to send the data to an email address.

Email address: youname@yourdomain.com

Subject: Website form

Message: Values submitted from web site form

Success Page: Select...

Error Page: Select...

☒ Write form data to a .csv file.

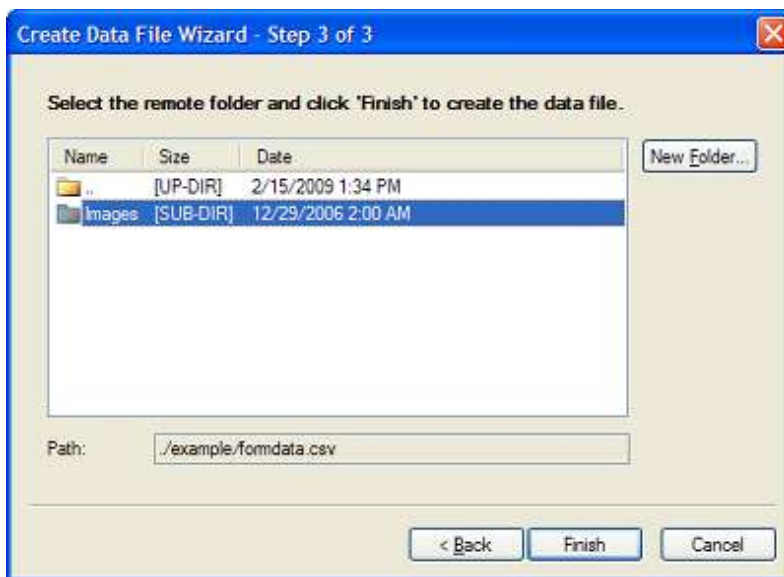
Filename: ./formdata.csv Create...

☐ Upload files to a folder on the server.

Upload folder: upload

OK Cancel

- **New feature:** Added 'Create data file wizard' to quickly create an empty csv data file, without the need for an external FTP client or having to change the permissions of the file manually.



The 'Create Data File Wizard - Step 3 of 3' dialog box is shown. It has a title bar with a close button. The main area contains a table with columns 'Name', 'Size', and 'Date'. The table lists two folders: '..' (UP-DIR) and 'images' (SUB-DIR). A 'New Folder...' button is to the right of the table. Below the table is a 'Path:' field containing './example/formdata.csv'. At the bottom are '< Back', 'Finish', and 'Cancel' buttons.

Create Data File Wizard - Step 3 of 3

Select the remote folder and click 'Finish' to create the data file.

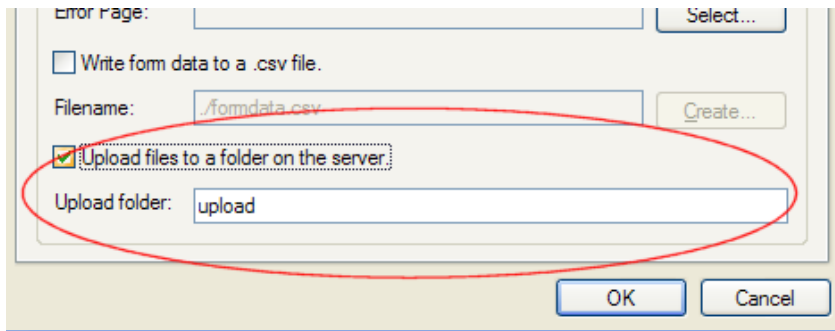
Name	Size	Date
..	[UP-DIR]	2/15/2009 1:34 PM
images	[SUB-DIR]	12/29/2006 2:00 AM

New Folder...

Path: ./example/formdata.csv

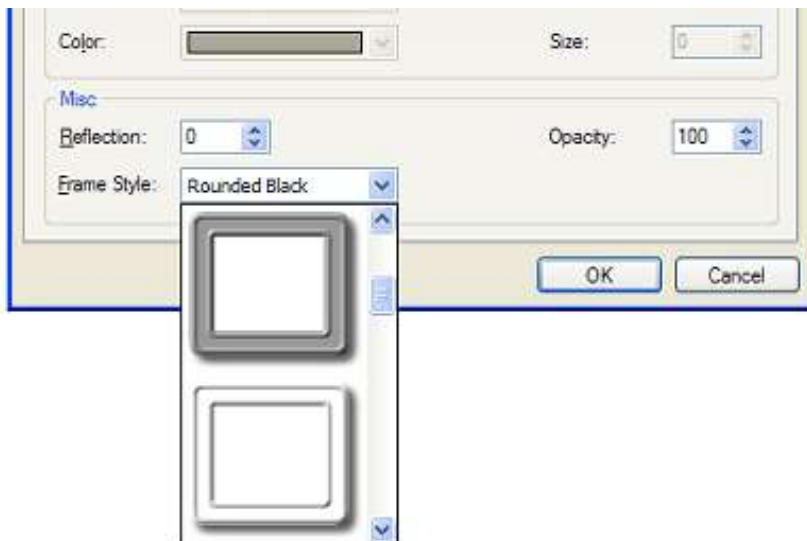
< Back Finish Cancel

- **New feature:** Added the ability to upload files to a folder on the server (instead of sending them via email)



New Images features:

- **New feature:** Border styles (Solid, Dotted, Dashed, Double, Ridge, Groove, Inset, Outset)
- **New feature:** Added support for predefined (global) border style.
- **New feature:** Copy/paste images directly from another application (PhotoShop, PaintShopPro, IE, FireFox etc) onto the page!
- **New feature:** Copy/paste images (and shapes) from Web Builder to another application.
- **New feature:** Added the ability to set frames for images.

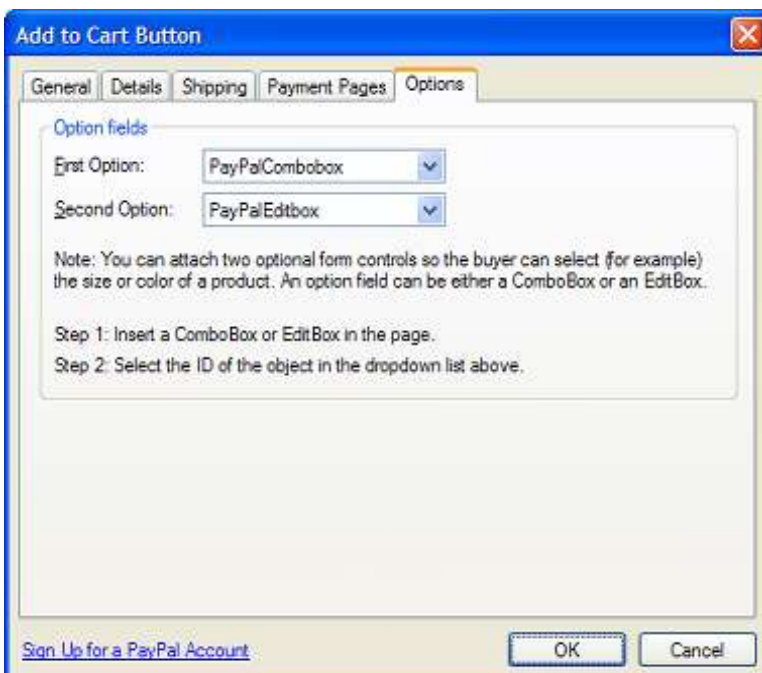


New PayPal Features:

- **New feature:** Added support for the latest (orange) PayPal button image + improved image selection.

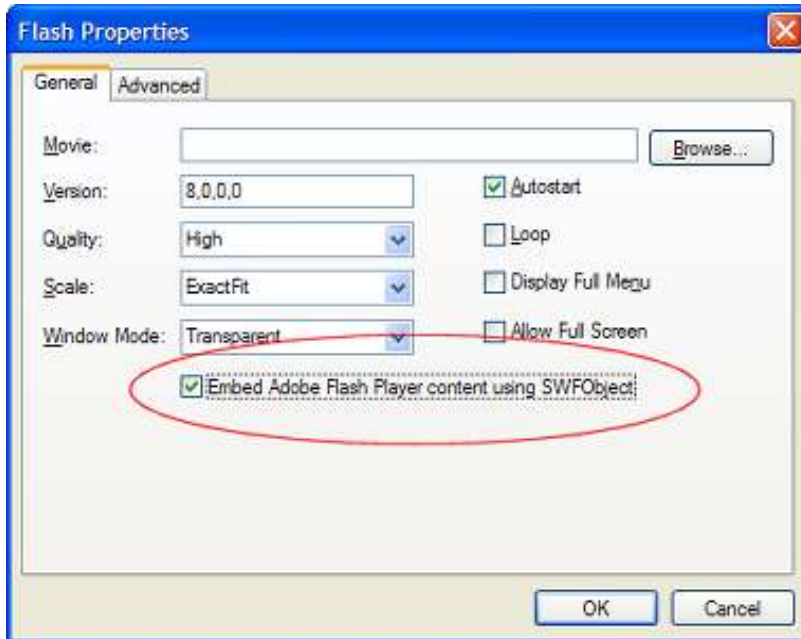


- **New feature:** PayPal option fields, easily add combo box or edit box fields to your PayPal webshop.

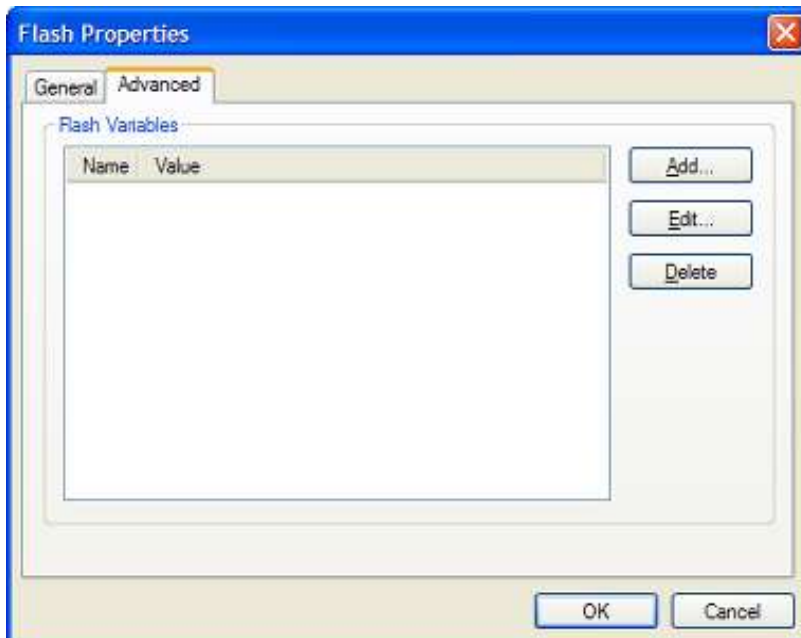


New Flash features:

- **New feature:** Support for swfscript in Flash object. This make the flash object W3C compliant. Can be enabled/disabled per Flash object.

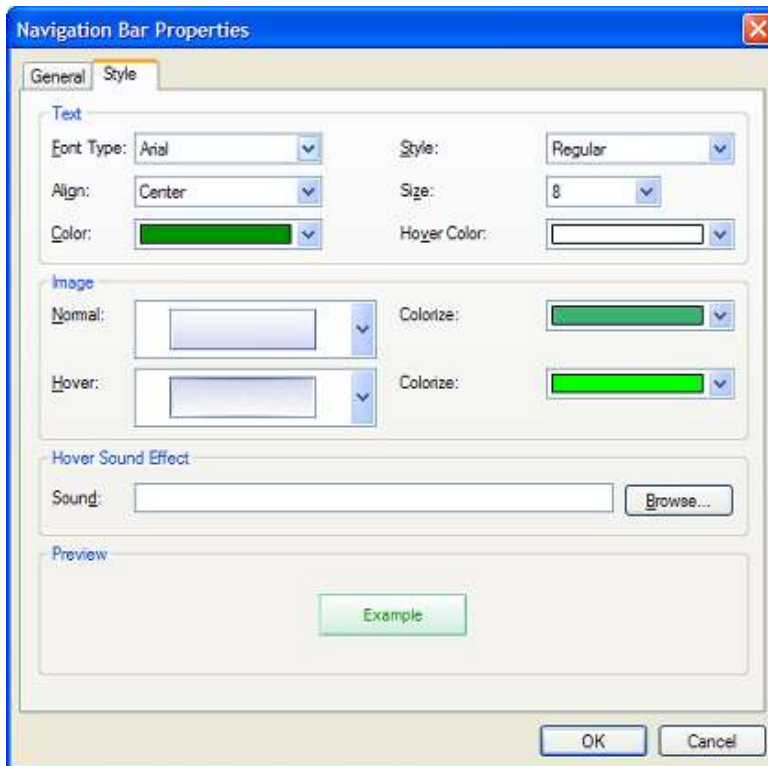


- **New feature:** Support for Flash variables.



New Navigation Bar features:

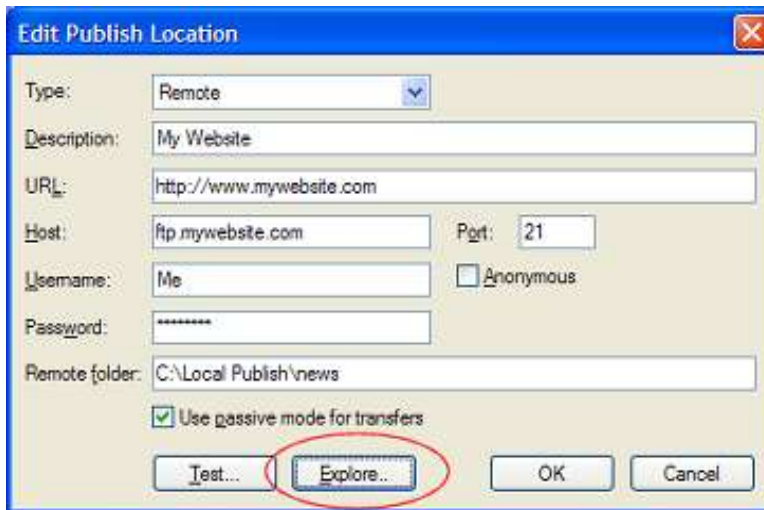
- **New feature:** Navigation bar button colorize property. Change the color of a button to almost any color. Now you have hundreds additional color variations to choose from!



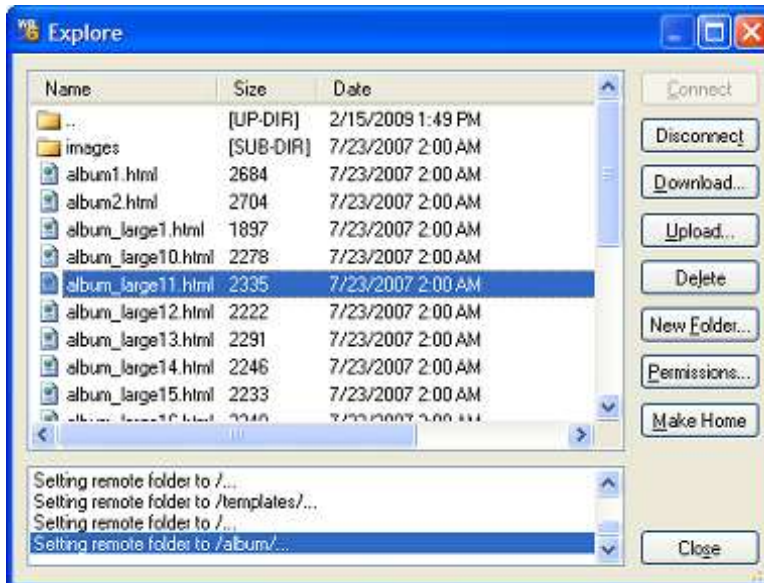
- **New feature:** Button images support the new preload option for a smoother mouse-over effect.

New Publishing features:

- **New feature:** Built-in FTP Client to manage your online files. The 'Explore' button in publish settings give you access to your published files.



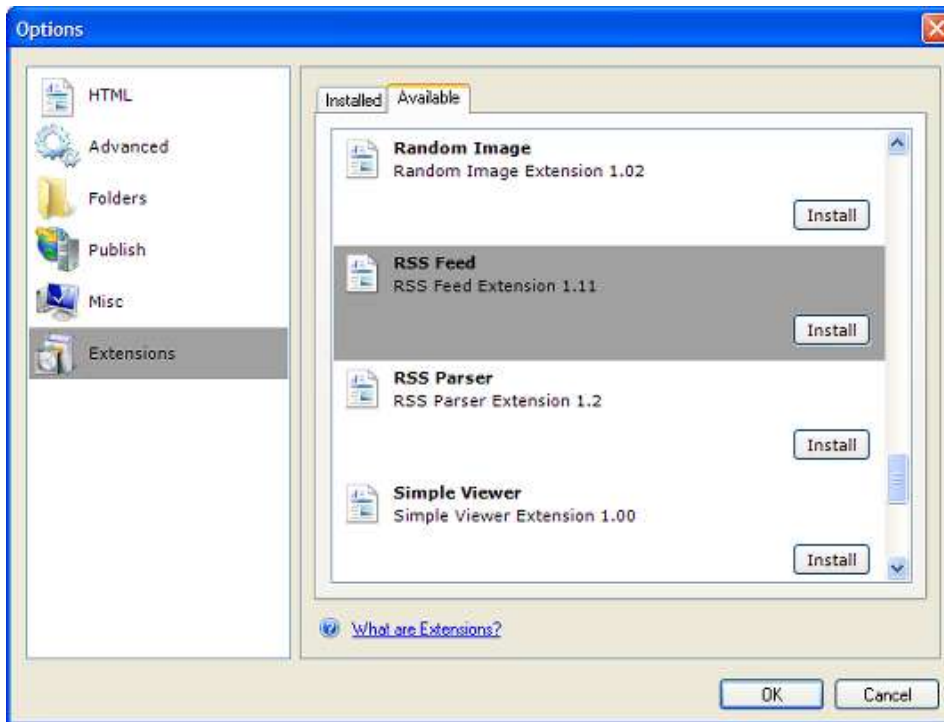
The new built-in FTP client also introduces an easy way to find the remote publish folder. Simply login to your account, browse to the folder and click 'Make Home'. WYSIWYG Web Builder will now use that folder as the root of your website.



New Extension features:

- **New feature:** Assets manager now also works on extensions.

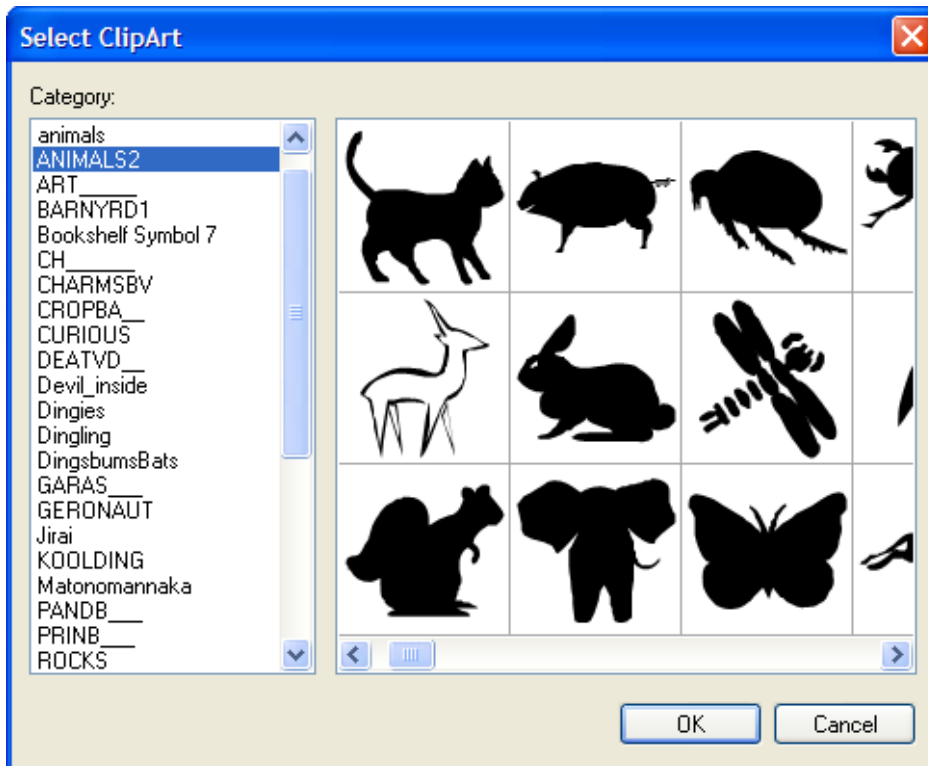
- **New feature:** Extension Manager! Now you can download, install, update and uninstall extensions from within the software!



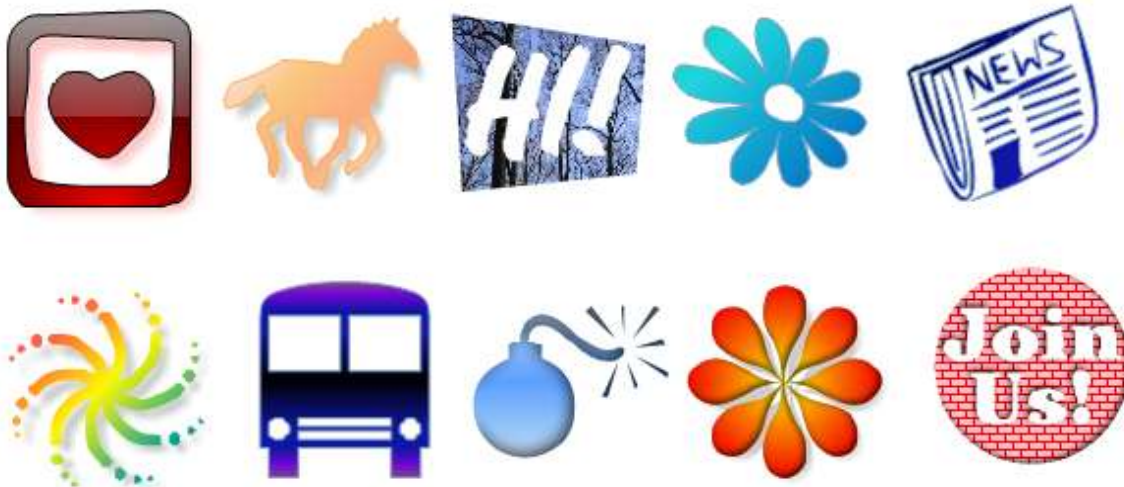
New Object 'ClipArt':

- ClipArt uses dingbat fonts and converts them to vector shapes. It has all the features of shapes, but now you can add almost any type of shape!

Download 1000's of additional shapes from the Internet in the form of dingbat fonts and turn them into advanced graphically objects of your page.

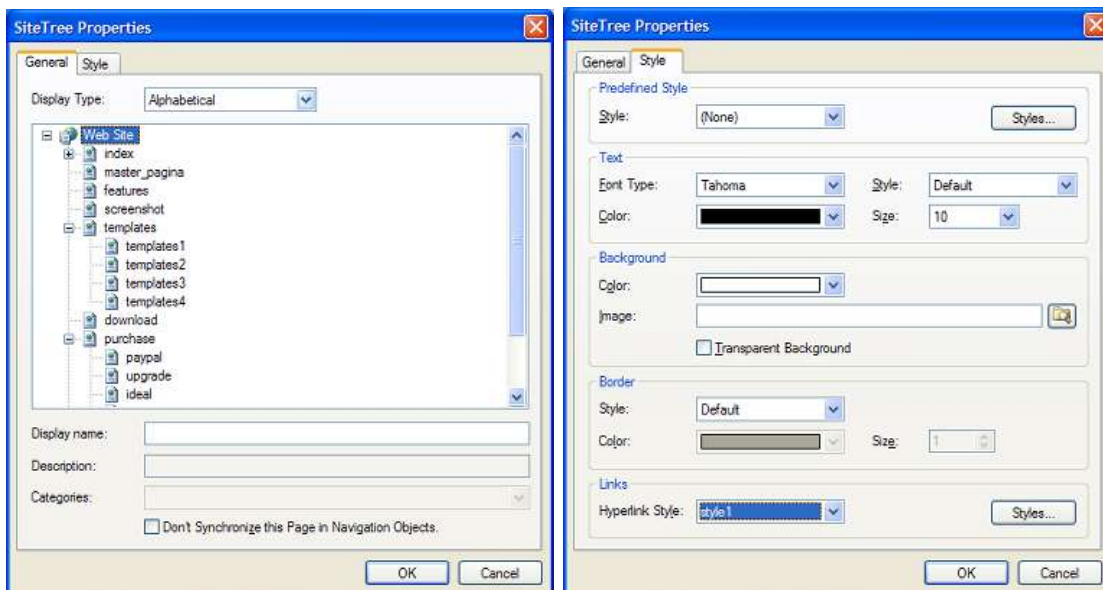


Apply effects, just as easy as with Shapes:



New Object 'SiteTree':

- SiteTree, display an overview of your website (SiteMap) in 3 possible styles:
Alphabetic, by category or in a tree view!



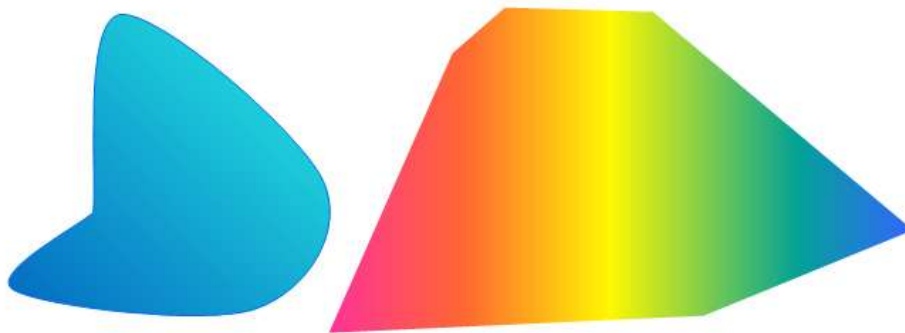
New Object 'Text Art':

- Text Art, create amazing logos, banners or headers. With several fill effects, warp effects, circled text, shadow, bevel, multiple lines, rotating.....



Drawing Tools (Polygon, Closed Curve)

- **New feature:** New MultiColor gradient effect.

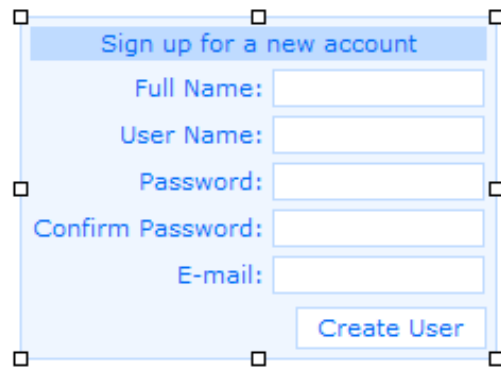


New Object 'Login System/Page Password Protection':

- WYSIWYG Web Builder now has a built-in (PHP) login system. Create a login system without any programming. No database required.

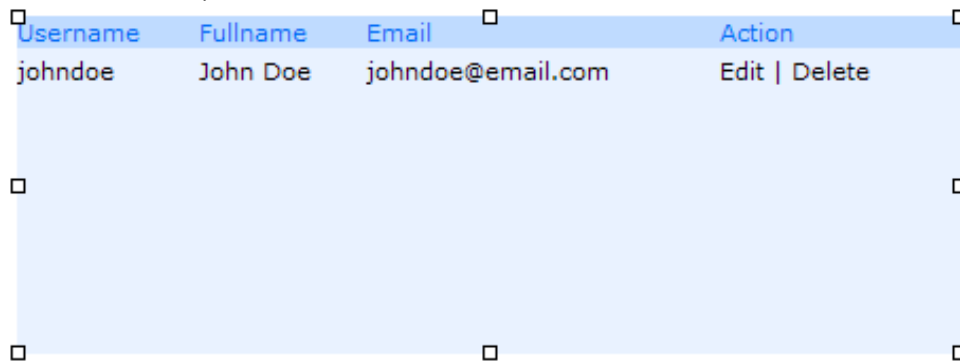
Predefined forms for login, signup, admin, password recovery, with lots of customize options. 7 new objects:

1. Signup - Allow users to sign-up for your protected pages



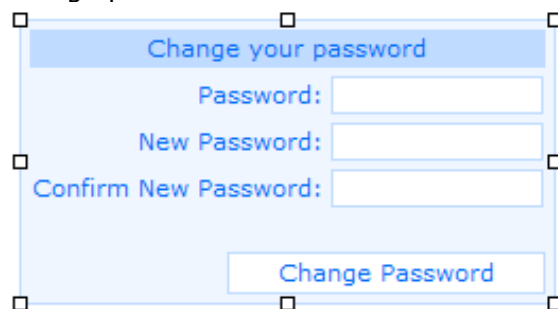
A light blue rectangular form with a title bar that says "Sign up for a new account". Below the title bar are five input fields labeled "Full Name:", "User Name:", "Password:", "Confirm Password:", and "E-mail:". At the bottom right of the form is a button labeled "Create User".

2. Admin - Create, Edit or remove users.



Username	Fullname	Email	Action
johndoe	John Doe	johndoe@email.com	Edit Delete

3. Change password - Allows the users to change their password.

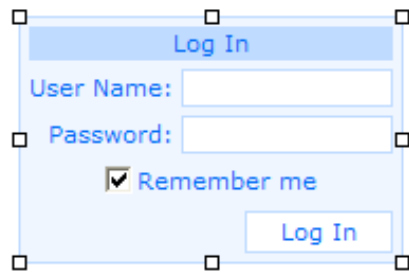


A light blue rectangular form with a title bar that says "Change your password". Below the title bar are three input fields labeled "Password:", "New Password:", and "Confirm New Password:". At the bottom right of the form is a button labeled "Change Password".

4. Protect Page - Add this to a page you want to protect.

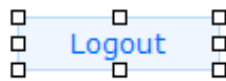


5. Login



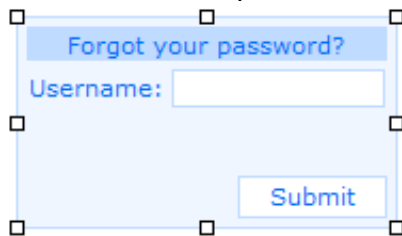
A login form mockup with a light blue background. At the top is a blue header bar with the text "Log In" in white. Below the header are two input fields: "User Name:" and "Password:". Below the password field is a checkbox labeled "Remember me". At the bottom right is a "Log In" button.

6. Logout – Logout



A single "Logout" button with a light blue background and a blue border.

7. Password recovery - Resend the password, in case the user forgot it.



A password recovery form mockup with a light blue background. At the top is a blue header bar with the text "Forgot your password?" in white. Below the header is a "Username:" input field. At the bottom right is a "Submit" button.

New Object 'You Tube':

- Added support for YouTube videos.



Other new features:

- Added Encoding property to **RSS Feed** object.
- Added **Bookmark** support to Navigationbar, Menubar, TextMenu, SlideMenu, TabMenu, GoMenu, ImageMap and SlideShow!
- Added Border styles to **Marquee** (Solid, Dotted, Dashed, Double, Ridge, Groove, Inset, Outset)
- Added support for predefined style in **Marquee**.
- **Master pages** can now be used across different folders. The master page does no longer have to be in the same folder as the pages that are using it!
- Redesigned **Ready-To-Use-JavaScript** property window. Properties now also available in Property Inspector.
- **Table** insert window now has style options, to quickly setup the style of a new table.
- Added 'Verify connectivity with activation server' option in the activation window.
- WYSIWYG Web Builder now uses the Office 2007 theme on all versions of Windows.
- Rulers have a more modern look.
- A warning will be displayed if you directly try to open a HTML page instead of the project file.

... and more!!!

Special offer:

If you buy version 5.x now you will get version 6.0 for free when it becomes available! This offer is valid for all licenses bought after January 1st, 2009

<http://www.wysiwygwebbuilder.com/purchase.html>

Registered users of WYSIWYG Web Builder will get a (+/- 40%) discount when upgrading to the new version.

WYSIWYG Web Builder 6.0 FAQ

<http://www.wysiwygwebbuilder.com/forum/viewtopic.php?t=16707>