

What is new in WYSIWYG Web Builder 6.5?

WYSIWYG Web Builder 6.5 is a major update with more than 65 new features and improvements (compared to version 6.1.2). Most of the improvements are related to compatibility, usability and fine tuning of existing features.

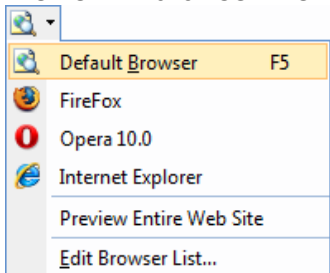
WYSIWYG Web Builder 6.5 will be available in December 2009.

This update will be free for all **registered users** of version 6.x.

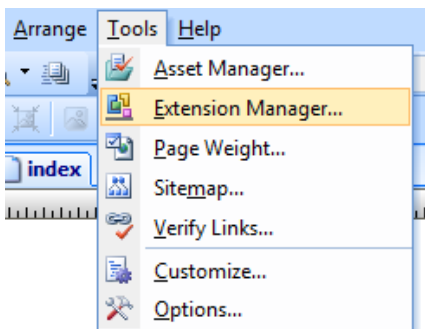
Thank you for supporting WYSIWYG Web Builder!

Some of the improvements:

- Events now validate on W3C validator.
- Shape text now also works when fill effect is transparent
- Improved quality of generated gif 'Publish text as image'.
- Menu bar overflow set to 'visible' (needed by Opera Browser).
- WYSIWYG Web Builder now supports 200 extensions.
- HTML 4.01 DOCTYPE now includes loose.dtd, for improved browser compatibility.
- Made all borders and tables compliant to the W3C box model.
- Text Menu now also supports white spaces as delimiters.
- Button name can now be empty. Useful to hide the button from the results.
- Increased the number of MRU (Most Recent Use Files) items to 10.
- Publish log now also includes folder of uploaded files.
- Changed 'Lock page size' to 'Lock page width', which makes the feature more useful.
- Highlight selected object in Object Manager.
- Added DPI awareness to most Web Builder objects.
- Preview in browser menu now displays associated icon for specified browsers.

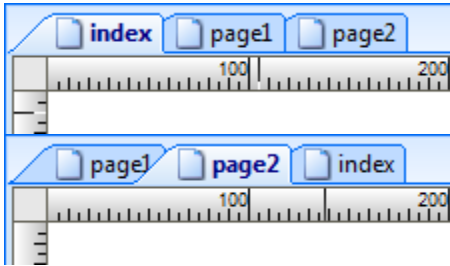


- Added Extension Manager menu item to Tools menu.

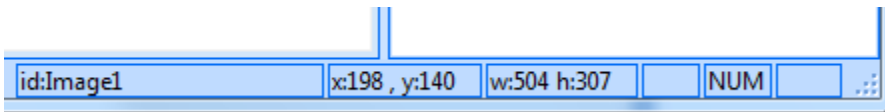


- And many more 'behind the scenes' improvements. Check out 'whatsnew.txt' for more details.

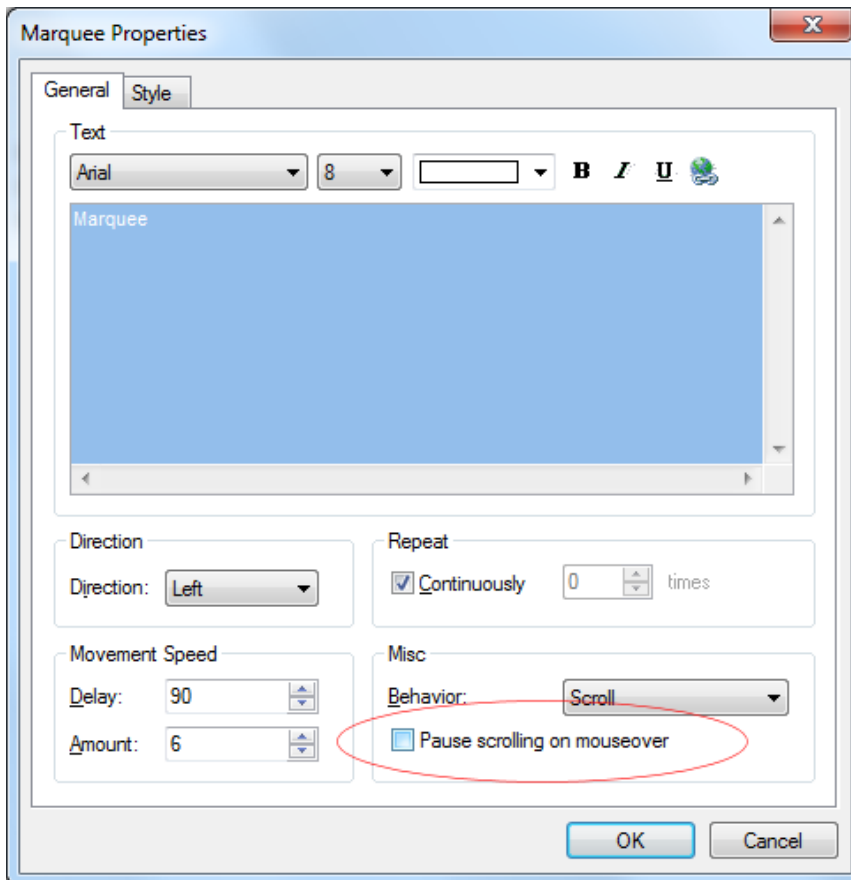
New feature: Page Tabs are now draggable, so they can be re-ordered.



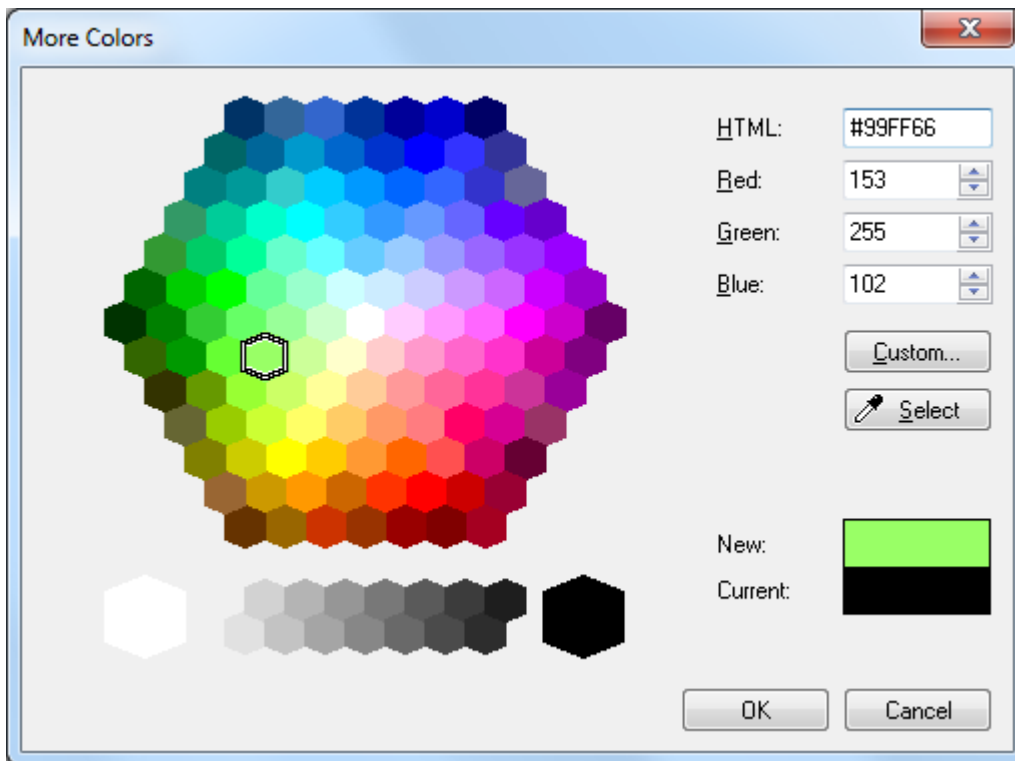
New feature: 'id' property of selected object is displayed in the status bar.



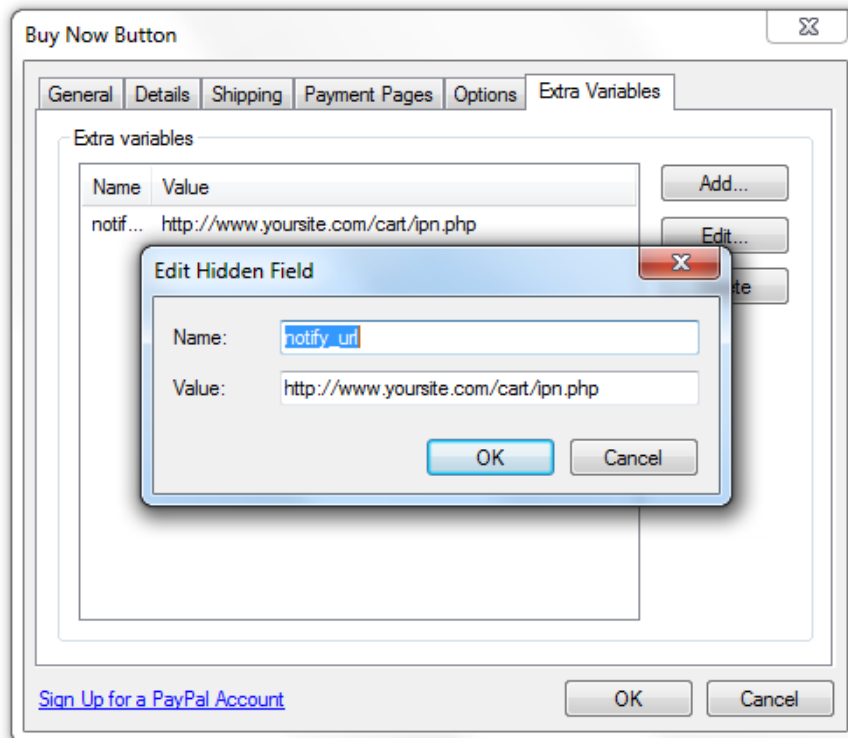
New feature: Added 'Pause scrolling on mouse over' option to Marquee.



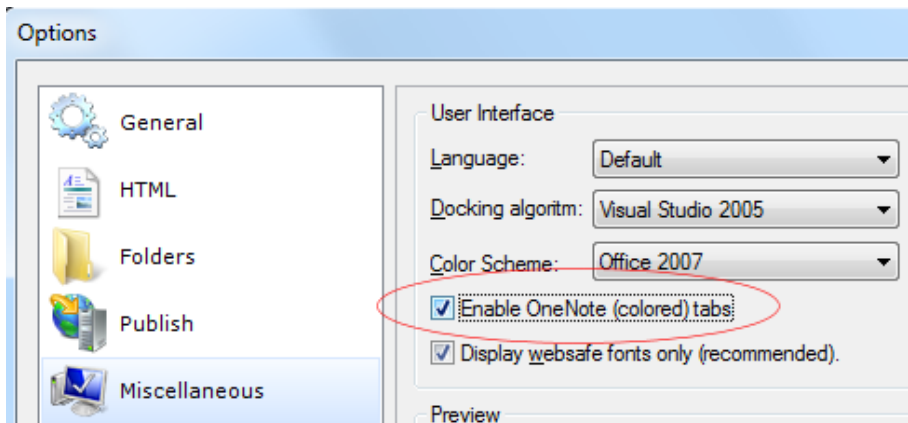
New feature: Redesigned color picker dialog under 'More Colors'.



New feature: Added the ability to add extra variables to PayPal tools.



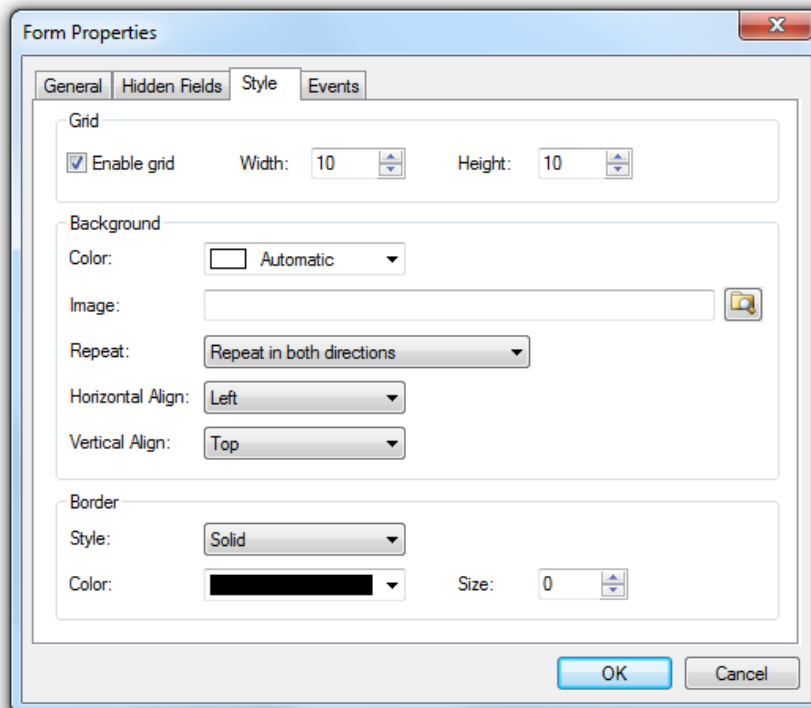
New feature: Added option 'Enable OneNote (colored) tabs'.



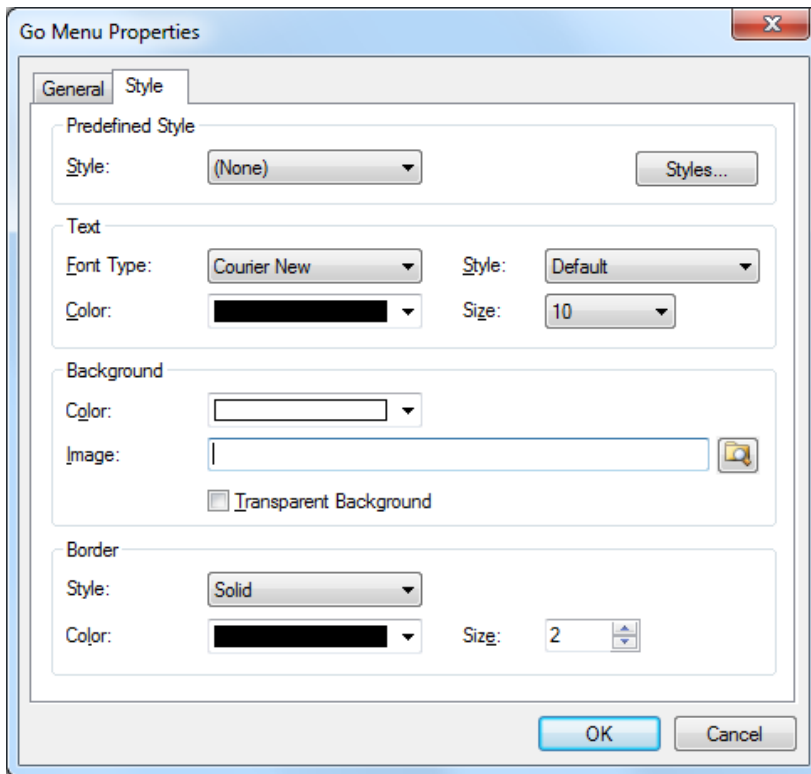
New feature: Added border style to combo box (implemented through workaround since this is not officially supported).



New feature: Added border style and background repeat options to form.

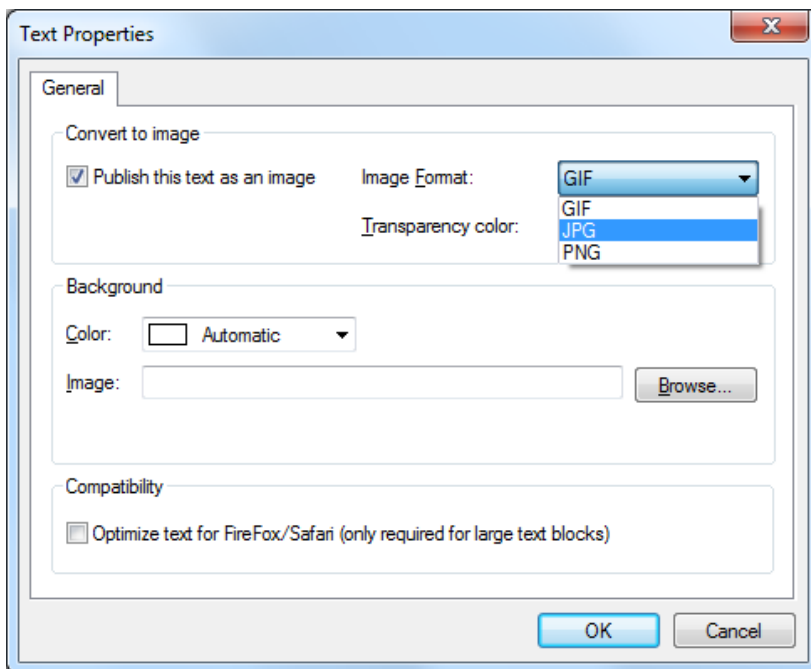


New feature: Adding styling options to GoMenu.

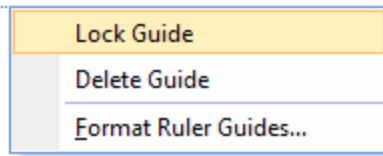


New feature: 'Publish text as image' now also support jpg or png as output format. Use png for the best quality.

New feature: Added 'Optimize text for FireFox/Safari' option to text object. An attempt to display text exactly as designed in all major browsers.



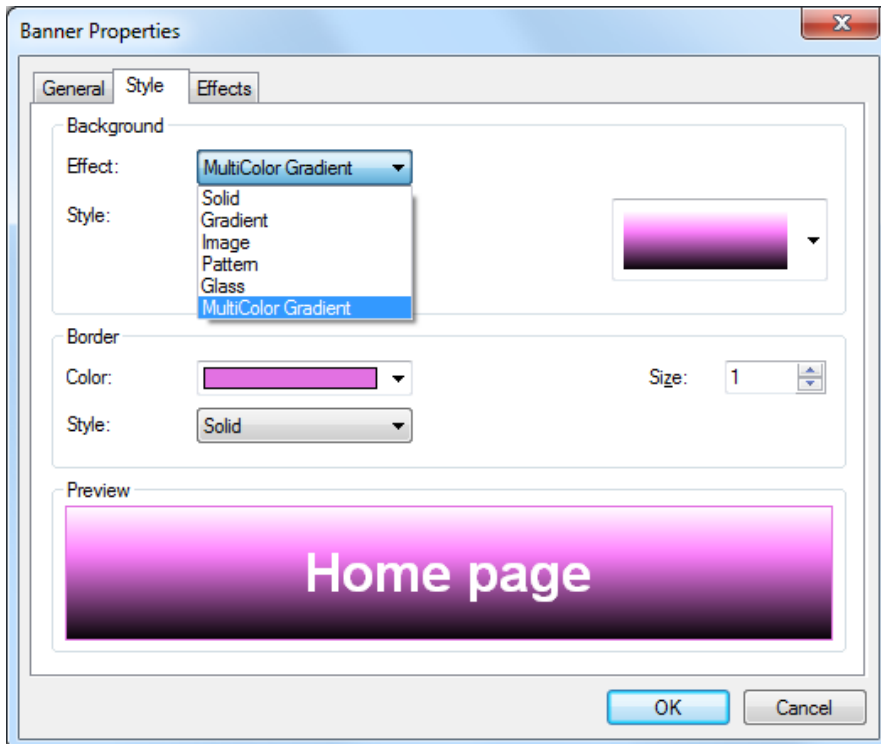
New feature: Added the ability to lock ruler guides.
New feature: Added context menu to ruler guidelines.



New feature: The text object can now be rotated. Text will be converted to an image!

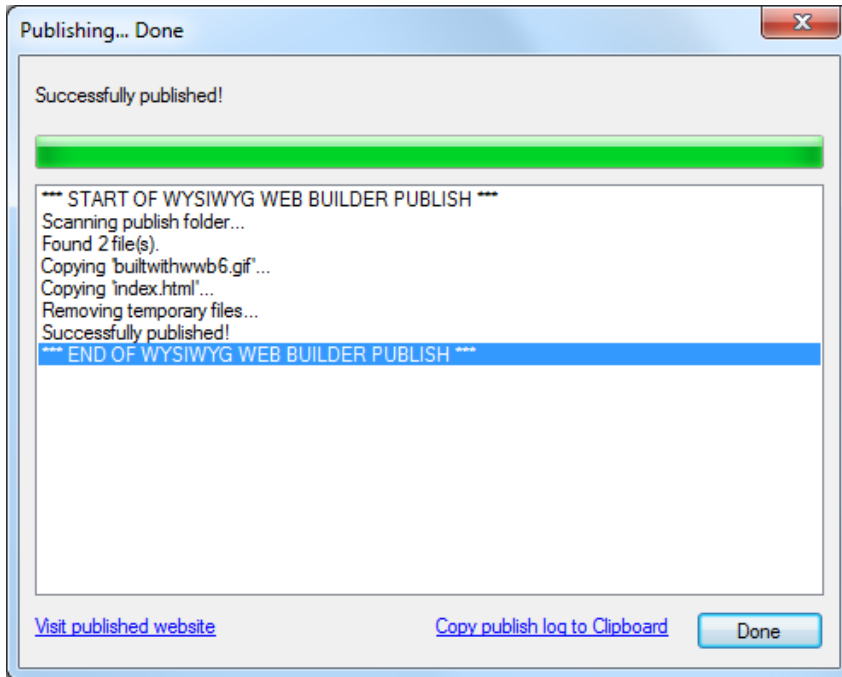


New feature: Added pattern, glass and multi gradient effects to banner object.



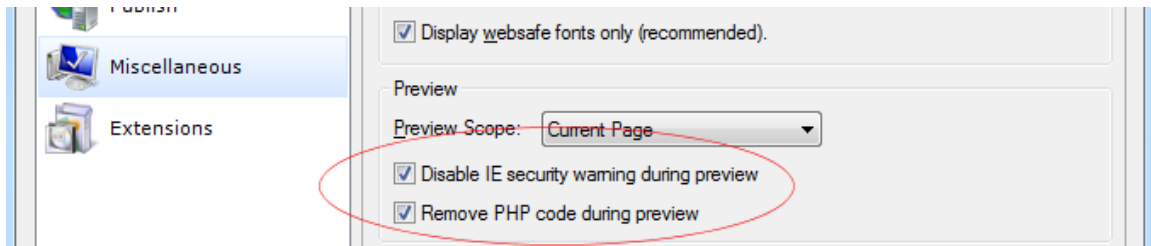
New feature: Added 'Visit published website' in Publish window.

New feature: Added 'Copy publish log to clipboard' in Publish window.

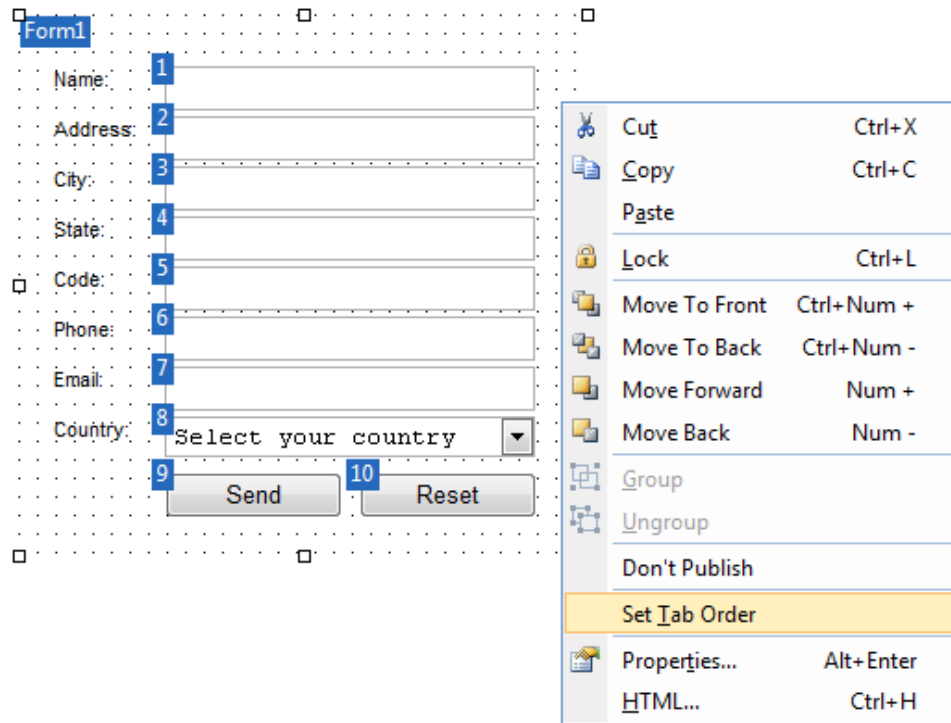


New feature: Added 'Disable IE security warning during preview' to preview options.

New feature: Added 'Remove PHP code during preview' option, to be able to preview PHP pages locally.

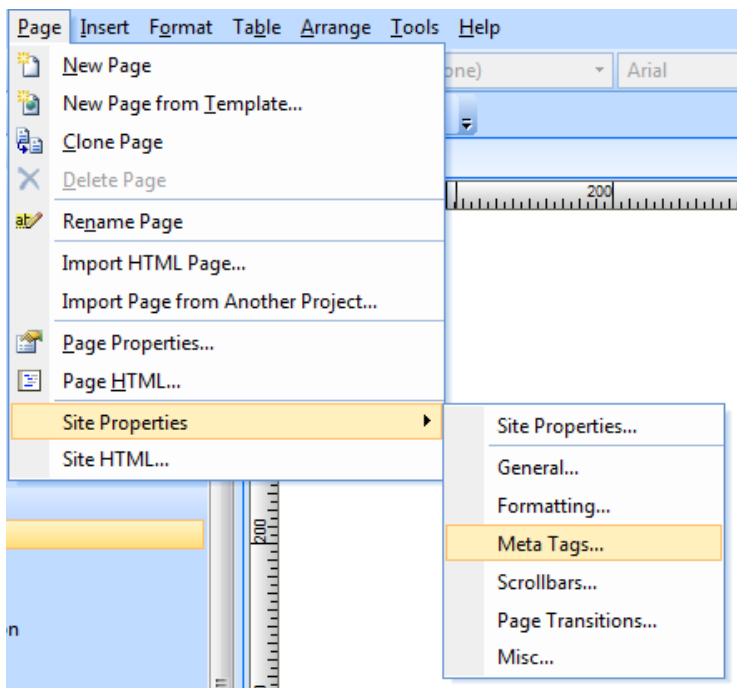


New feature: Added 'Set tab order' option to forms. This option can be used to quickly set the tab index of form objects.

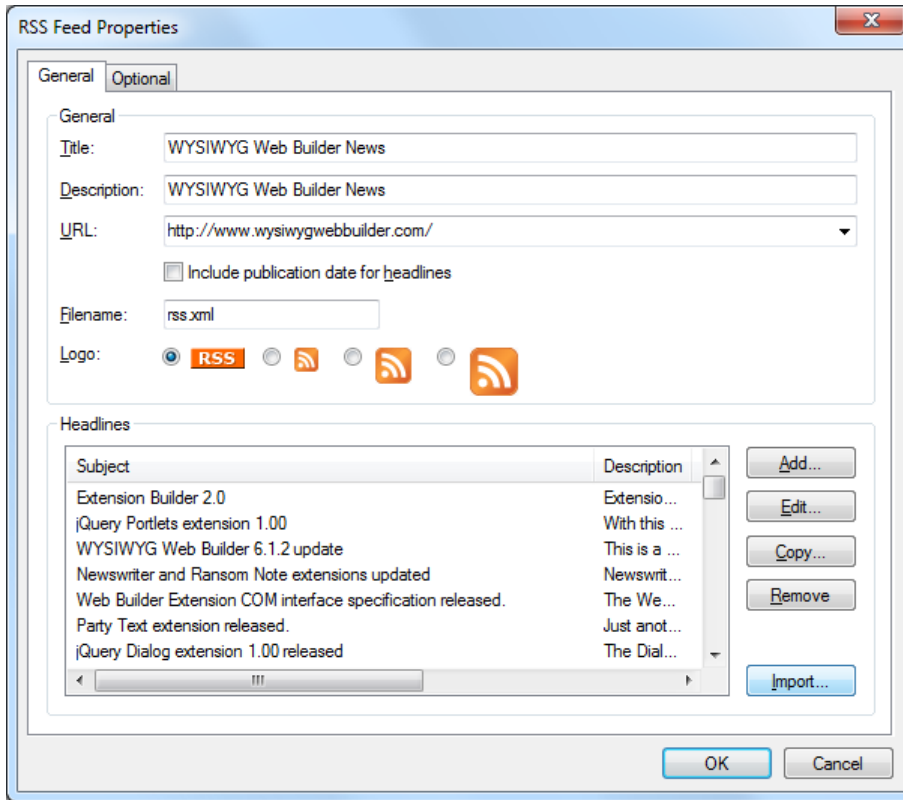


New feature: Added 'Site HTML' (Menu->Page->Site HTML) this allows you to set HTML for all your pages.

New feature: Site Properties categories can now be opened individually. So you can set the background properties without also updating the Meta tags.



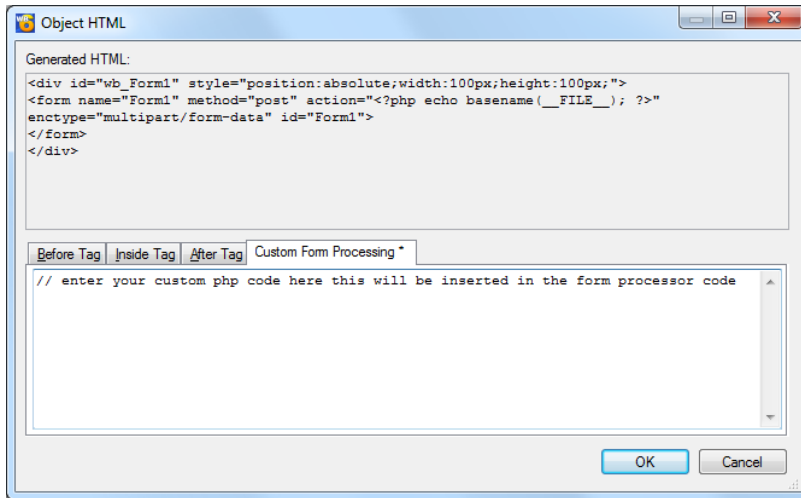
New feature: Added 'Import' and 'Copy' options to RSS feed.



New feature: Added 'Gaussian blur' (glow) shadow effect to Shape, ClipArt and Text Art.



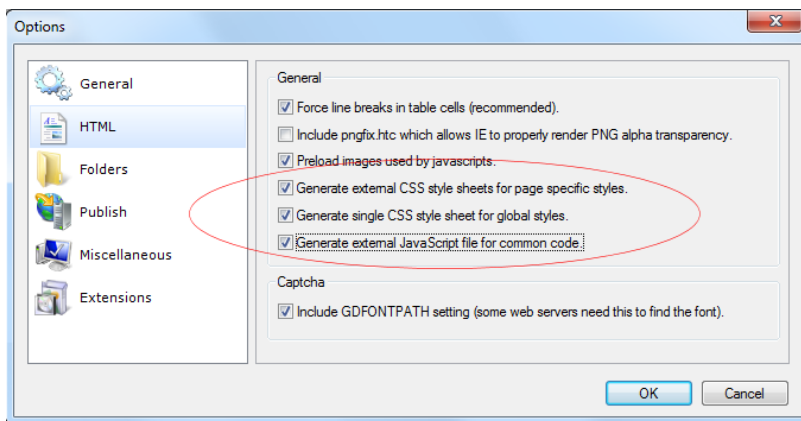
New feature: Added ability to insert custom form processing code. (useful for adding CC/BCC email, store to database or do other additional processing).



New feature: Added 'Generate external CSS style sheets for page specific styles'.

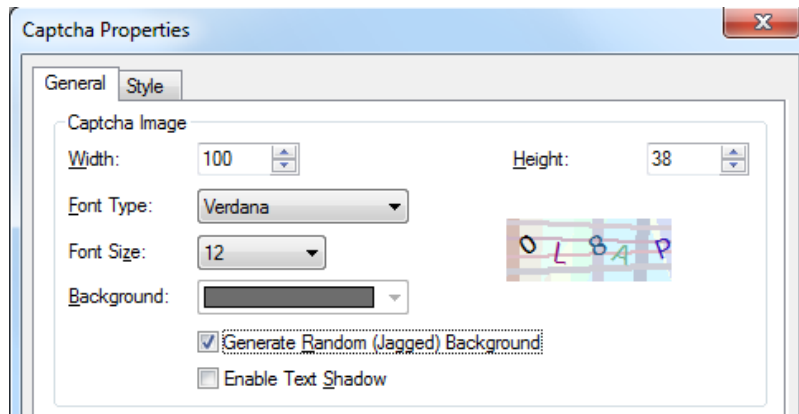
New feature: Added 'Generate single CSS style sheet for global styles'.

New feature: Added 'Generate external JavaScript file for common code'.

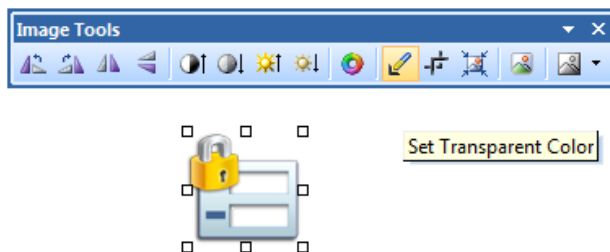


New feature: Added 'Generate random background' option to CAPTCHA, this will generate a random background which is more difficult to read by OCR.

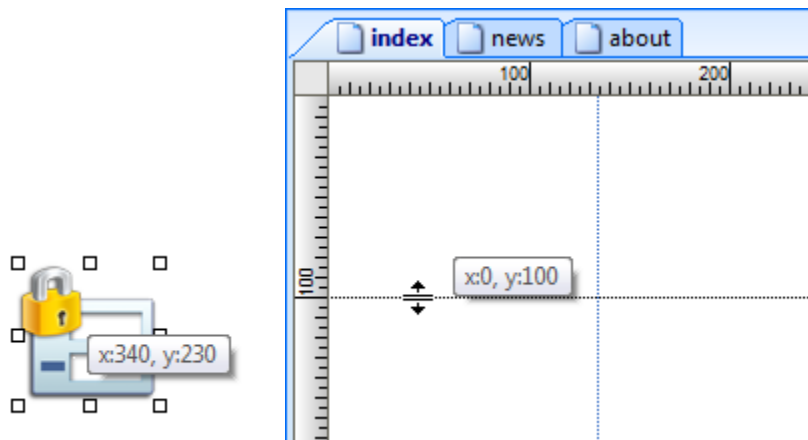
New feature: Added 'Enable text shadow' option to CAPTCHA.



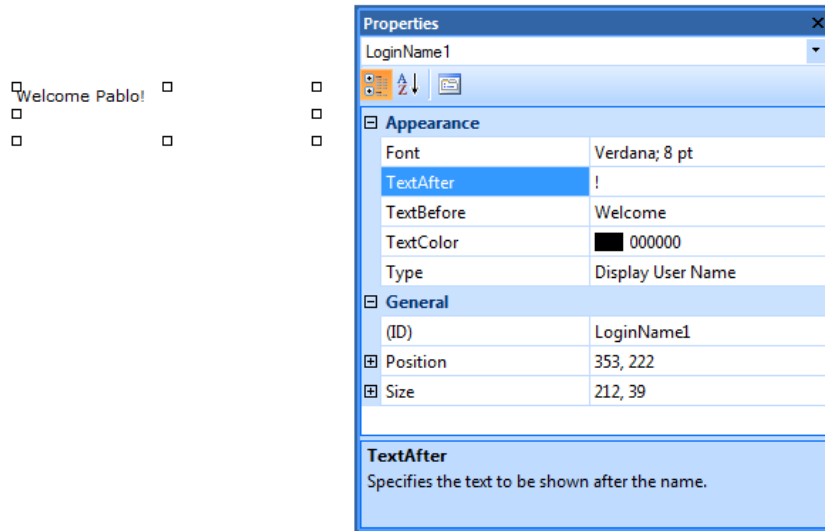
New feature: Added 'Set Transparent Color' to image tools. Make any image transparent...



New feature: Added Tooltips while resizing and moving objects and ruler guides.



New feature: Added new object 'Login Name' which can display the name of the logged in user (Login Tools).

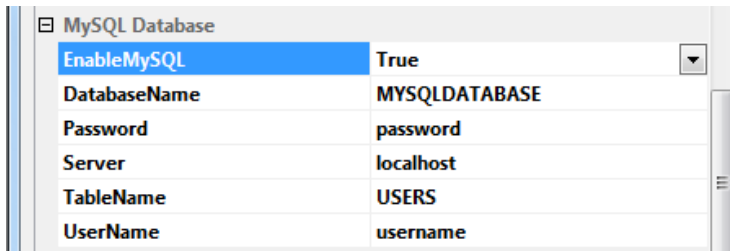


New feature: Added button and label 'alignment' properties to change password, login, password recovery and signup objects.

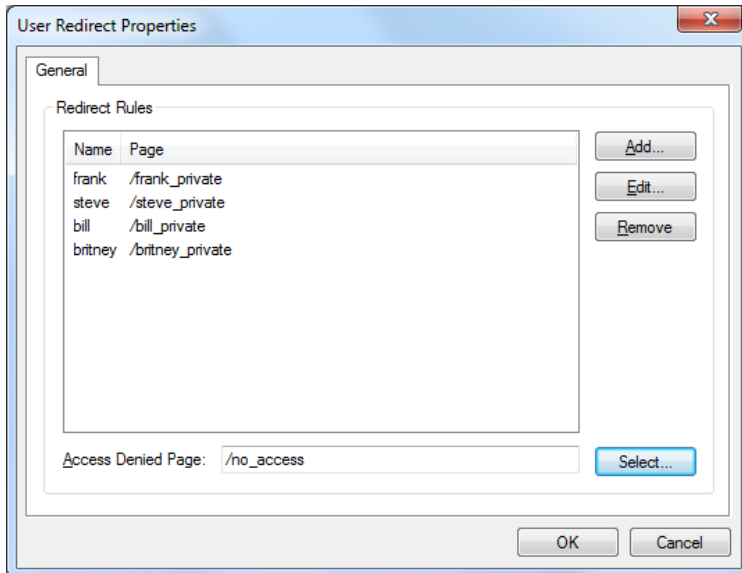
New feature: Added CAPTCHA field to Signup object.

The image shows a 'Sign up for a new account' form. The form has the following fields: 'Full Name:', 'User Name:', 'Password:', 'Confirm Password:', 'E-mail:', and 'Verification:'. The 'Verification' field contains a CAPTCHA image with the text 'OL84P'. At the bottom of the form, there is a 'Create User' button.

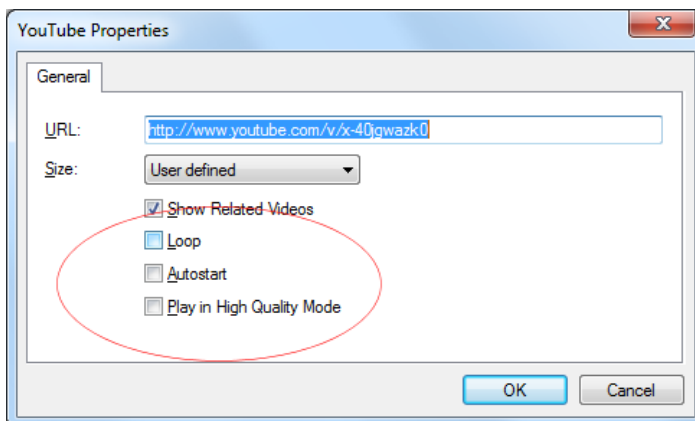
New feature: Added MySQL database support to Login Tools.



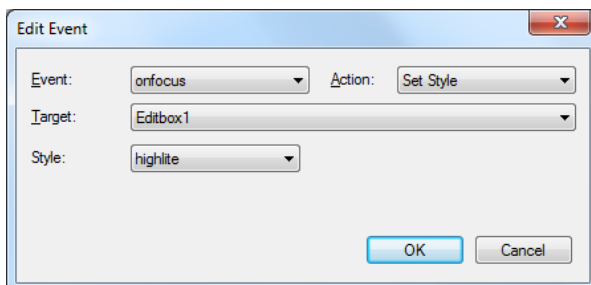
New feature: Added 'User Redirect' object to Login Tools. Allows you to redirect the visitors to a specific page based on their user name.



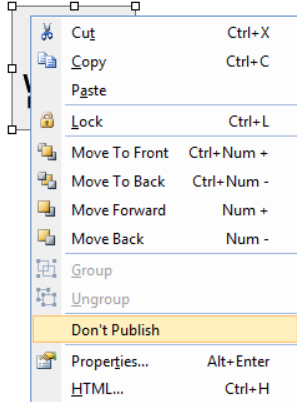
New feature: Added 'Loop', 'Autostart' and 'Play in high quality mode' properties to YouTube object.



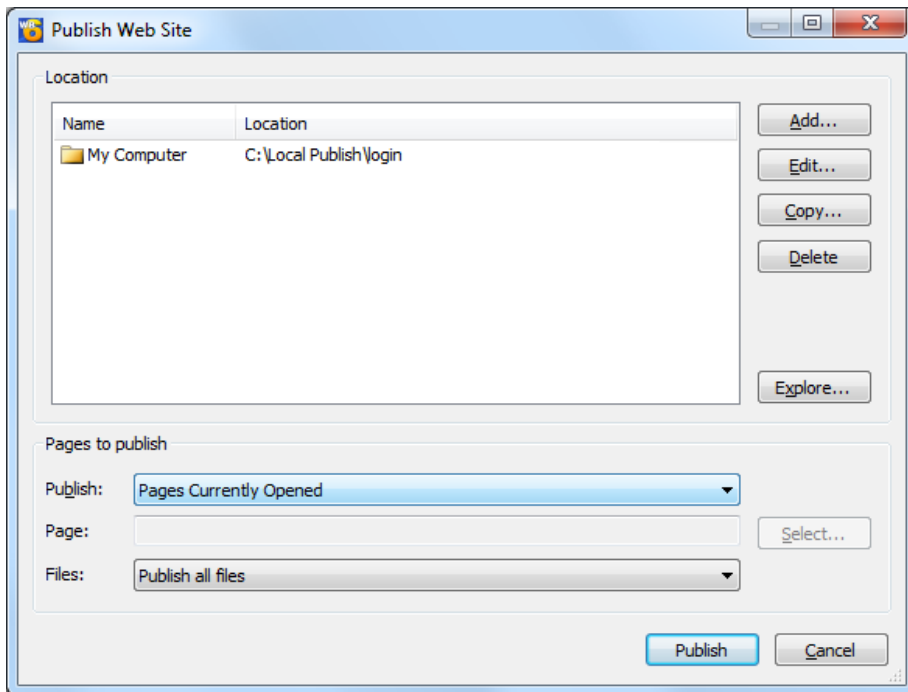
New feature: Added 'SetStyle' action to Events, so you can dynamically set a new style for an object.



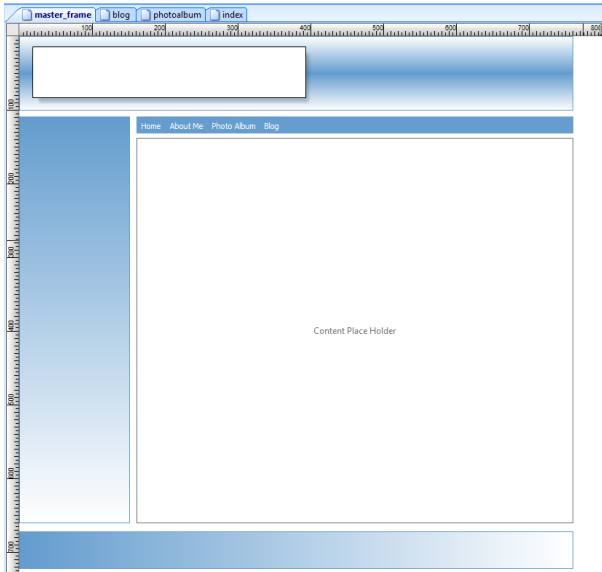
New feature: Added 'Don't publish' option to objects. This allows you to exclude an object's assets from being published. Useful to reduce the publish/uploading time.



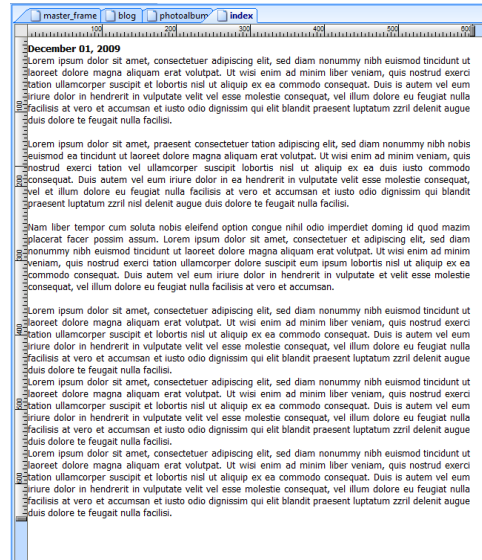
New feature: Added 'Publish pages currently opened' option in Publish dialog.



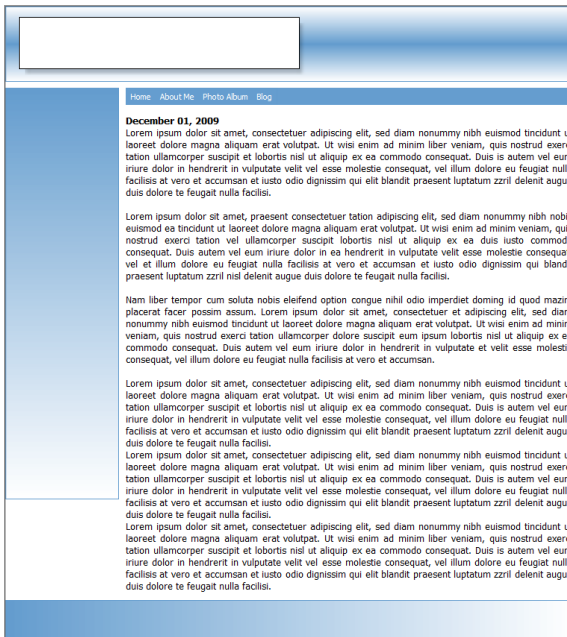
New feature: Added support for Master frames! Building website with a consistent look never has been easier! You can even automatically expand the layout if the content is larger than the content place holder!



Master Frame with Content Place Holder



Page Content



Result in browser

The master frame and content page will be merged into one page when it is preview/published.

Note that the footer has been automatically repositioned because the page content was larger than the content place holder! All objects below and at the right side of the content place holder object can be repositioned automatically. You can also select to display scrollbars instead.